



# Newsletter

## Spring 2016

*Welcome to the 2016 Newsletter.*

I hope you find inside some useful information and activity in your local community. It's a real honour to work along side the parish community and see how much time and effort goes into all the events which run within the parish. These events are essential for parish funds and key to helping with hall refurbishments.

The Sopley festival was a great success growing from strength to strength every year and very much looking forwards to another great festival this summer. Lots to do for all age groups such as pets corner, children's games on the lawn, live music and why not bring your dog along for the doggy dash! We look forwards to seeing all of you there with friends and family.

Meetings...

Our Parish council meetings are held on the third Thursday of every other month. So why not come along and catch up with fellow parishioners and find out what's occurring.

Finally I would like to take the opportunity to welcome our new councillors, Cllr Alan Pope and Cllr Teela Liberty Spark.

*Dan Shutler, Parish Council Chairman*

### *Dates for your Diary*

Parish Council Meetings are usually held on Thursdays every other month @ 7.30pm in the Parish Hall - confirmed dates are advertised in the Parish Boards and on the website:

[www.sopley.gov.uk](http://www.sopley.gov.uk).

**AGM & Annual Assembly Thursday,  
19th May 2016 @ 7.30pm,**

#### *Inside this issue:*

Parish Clerk's Report	3
Annual Assembly	18
Parish Hall	8-9
Stepping Stones	10-11
Sopley School	24, 31-35
UK Youth News	29
Avon Tyrrell Estate	22
Useful Contacts	36

***All events are held  
at the Parish Hall  
unless otherwise  
stated and are  
subject to change.***

***Please keep an eye  
on the Parish  
Boards and website.  
[www.Sopley.gov.uk](http://www.Sopley.gov.uk).***

***Any queries please  
contact one of the  
Parish Hall  
committee  
members or email  
[parish.clerk@sopley.  
gov.uk](mailto:parish.clerk@sopley.gov.uk).***

# SOPLEY VILLAGE FESTIVAL

**Saturday July 9<sup>th</sup> 2016**

**12–5pm**

**Owls Barn & The Old Vicarage**

**Derritt Lane, Sopley**

***“Two Lawns and a Field full of Family Fun!”***



---

## **In the Field**

Vintage Tractors

Classic Cars

Steam Engine

Fun Dog Show

Terrier Racing

Clay Pigeon

Rifle Range

Local Crafts & Produce

Books, Plants and Flowers

Bar and BBQ

*and more...!*

---

## **On the Back Lawn**

*Kidzone*

Bouncy Castle

Coconut Shy & Skittle Alley

Toddlers' Play Area

Face-Painting

Maypole Performance

Ice Creams & Refreshments

---

## **On the Front Lawn**

*Tea, cakes and live entertainment*

Local performers, including:

...

The Bluestockings Vocal Trio

...

Sopley School Choir

---

***And in the evening at Owls Barn***

**HOG ROAST, BAR AND LIVE ENTERTAINMENT**

**7pm till late**

---

***For further details***

[www.sopley.gov.uk/sopley-parish-hall](http://www.sopley.gov.uk/sopley-parish-hall)



Sopley Parish Hall

Tel: Ann Ramm 01425 674668 or Ron Lakey 07801 393202

Organised by Sopley Parish Hall Committee

Charity No. 1130934

All monies raised go towards the refurbishment of Sopley Parish Hall

## Parish Clerk's Report



Hi All,

I hope you are enjoying a lovely sunny start to Spring/Summer 2016.

Firstly I would like to thank all those that helped with the litter pick at the start of April it again was a fantastic turn out. I have pencilled in next year's date at this stage and hope you may be able to pop it in your diaries for next year **8th & 9th April 2017**. This will be confirmed in the Parish Boards/Websites nearer the time. As with all Events I am more than happy to print and advertise on the above too. Just drop me an email [parish.clerk@sopley.gov.uk](mailto:parish.clerk@sopley.gov.uk).

Its been an interesting year and I am pleased to confirm that the Council remains in a healthy financial position and has even been able to donate funds to the Sopley Parish Hall towards their refurbishment. There are also funds to hopefully start "community" work on Vatcher's Common which is an ongoing project.

On the issue of funds I wonder if anyone would be happy to receive this Newsletter in an online format, saving printing and postage costs. If you would like to be added to a distribution list for this and other Social Events please email me with your contact details. These will be held securely and no third party emails will be sent. Please email [parish.clerk@sopley.gov.uk](mailto:parish.clerk@sopley.gov.uk).

So onward with 2016 and Sopley's ongoing Community Spirit, fingers crossed for a lovely hot, sunny Summer!

Looking forward to another successful "Sopley Festival" on 9th July 2016, last year's profit was the best so far let's make this year even bigger and better.

Please find below my details if you wish to contact me.

Email: [parish.clerk@sopley.gov.uk](mailto:parish.clerk@sopley.gov.uk)

Telephone: 01425 674833

Mobile: 07935 448405

With kind regards, Katie

[www.sopley.gov.uk](http://www.sopley.gov.uk)



(Sopley Village & Sopley Parish Hall)



## Annual Sopley Spring Clean 2016

Many thanks to all of the Parishioners who participated in the Annual Spring Clean this year on 2nd/3rd April 2016. Not a bad turn out again but we can always do with a few more hands. Both start points were well supported, thanks to the people that met at Sopley School and the Parish Hall. Also a nice gathering was hosted as always by the Woolpack where everyone enjoyed a drink and catch up. Thanks again to Janet and Richard for the collection of bags for NFDC to collect.

**Date for your diary next year the Annual Spring Clean will be held on the weekend of 8th/9th April 2017.**

Further details will follow in the Parish Boards/Website/Facebook.

[www.sopley.gov.uk](http://www.sopley.gov.uk)

### **D.SHUTLER FENCING & EQUESTRIAN CONTRACTORS**



FENCING ~ MENEGE CONSTRUCTION

MUCK HEAP REMOVAL ~ Paddock MAINTENANCE

HEDGE CUTTING ~ HAY & STRAW



01425 673113

07870404513

[danshutler@aol.com](mailto:danshutler@aol.com)

[www.sopley.gov.uk](http://www.sopley.gov.uk)

## SOPLEY VILLAGE WOMEN'S INSTITUTE

In January 2016 our super friendly group celebrated forming 3 years ago. We continue to meet each 3<sup>rd</sup> Tuesday of the month, at 7pm (for 2 hours) at the Sopley Village Hall, Priest Lane. Cups of tea or coffee are served – of course with cake! - and the bar is often open too!

Our monthly meetings are planned for the year ahead and will often have a recommended speaker, or perhaps we will “have a go” at a new craft together. During 2015 we made a bespoke, unique beaded necklace, enjoyed a cupcake and a chocolate demo and tasting, and held a Harvest Festival service in Sopley Church, followed by a wonderful Carol Service on 1 December in Church - and our annual Summer Party & BBQ and Christmas Party were really great fun.

In 2016, we have been learning about the bravery of the Countess of Rothes following the sinking of RMS Titanic in 1912, the benefits of hypnotherapy, learning to play the ukulele and have an outing to The Globe Theatre in London. A long tradition of the local WI Groups is the planning and making crafts for the year's New Forest Show competitions.

**++ DO PLEASE LOOK AT THE PARISH NOTICEBOARDS FOR OUR MEETING TOPICS ++**

All local ladies are welcome to find out more and come along for a “taster” evening, for which a £4.00 charge is made as a guest.

Then 2016 Annual Membership (pro rata) is £37.50. For more information, contact Julia or Anne.

**Chairman Julia Emmel: 01425 672697 or [julia.emmel@btinternet.com](mailto:julia.emmel@btinternet.com)**

**Secretary Anne Collins: 01425 674204 or [anne@aerokites.com](mailto:anne@aerokites.com)**

**Find out more about the Women's Institute go here: [www.thewi.org.uk](http://www.thewi.org.uk)**





OWLS BARN FARM

CAR BOOT SALES

4<sup>TH</sup> SUNDAY OF EACH MONTH  
STARTING APRIL TO OCTOBER  
SELLERS 9am – 1pm      BUYERS 10am – 1pm

Teas, coffees, bacon baps, hot dogs

## Compass Literacy Tuition

Is your child in need of some extra support or challenge with reading, writing, phonics or spelling?

Are there aspects of the SATs grammar or reading tests that they can't get to grips with and need a supporting hand with revising?

...Expanded noun phrases, word classes, progressive and perfect tenses, passive voice ... are all part of the new grammar test. Perhaps I can help?

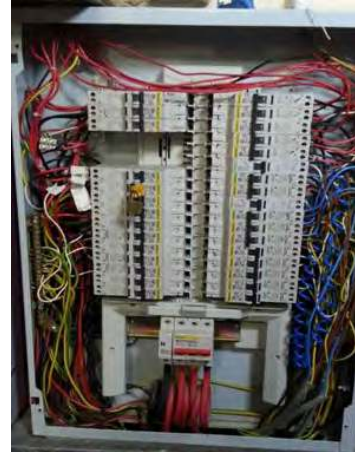
I am an experienced primary teacher and tutor with specialist literacy consultant experience based in Bransgore. I have worked right across the primary age range and have recent experience teaching more able pupils in Key Stage 2.

Please e-mail or telephone if you would like tuition for your child. Small groups working on similar skills would be considered.

Karen Merritt, Compass Literacy Tuition,  
Tel 07795411263      [karen@compassliteracy.co.uk](mailto:karen@compassliteracy.co.uk)

# Your local Sparky!

- \*Rewires, full or partial, no job too small (or too big!)
- \*Regularly work on farms, stables, barns, outbuildings etc.
- \*External wiring to gardens, ponds, outbuildings, gazebos, etc.
- \*Thatched, listed and period properties a speciality
- \*Full inspection and testing to City & Guilds 2391 for property pre-sales and pre-purchase
- \*Inspection & testing reports for insurance company requirements
- \*Fault-finding
- \*Security lighting
- \*New supplies installed, underground & catenary (overhead)
- \*Full £2M public liability and public indemnity insurance
- \*Part P registered via ELECSA, all work guaranteed
- \*Many years experience working for leading aerospace and defence companies worldwide
- \*References available, mostly from local households and businesses



**Telephone Zaz on 0794 1220201 / 01425 672520.**

**Email: [avon-power@sendemailhere.co.uk](mailto:avon-power@sendemailhere.co.uk)**

## Sopley Parish Hall Annual Report - May 2016



This is my first annual report, and I have to say a massive THANK YOU to all the community members who have attended Parish Hall events throughout the year, and to the amazing Hall committee members who month after month give up so much of their valuable time to organize enjoyable and entertaining events for our community, hopefully making a small profit along the way to support the maintenance and running of our hall. I would also like to thank all the local

parishioners who use the Hall for functions, and all the local clubs and organisations too. These are all essential to the success of the Hall and make our beautiful rural community stronger. We couldn't do it without you. Indeed, there would be no point.

It has been five years now since the Hall underwent a major refurbishment programme, so it's no surprise that one or two areas require redecoration on occasions. However, the Hall is maintained in good order as we now have a regular cleaner and maintenance man in Judy and Ian Pinder. This has made a huge difference, so thanks to both of you.

During the year we have been able to afford to have a new kitchen put in, and a new fridge. What a difference that has made. We are now able to deal with the preparation of hot food with relative ease.

Barry Hughes is still chasing grant money that may come up for community projects like ours so we can complete the refurbishment programme. It's a hard slog for him since there is so little grant funding money available in the current financial climate, but we are most grateful for his efforts.

We had some great events last year. In March a St Patrick's music night from our talented resident band "The Hall Raisers and Associates" who so generously give their time free. The Hall was packed, and a wholesome Irish stew and busy Bar filled us all up.

Many of us realized we weren't as fit as we thought we were at the barn dance in April. Another packed night - a really enjoyable evening with food and the bar open as usual.

May saw a very competitive Treasure Hunt followed by a BBQ and Bar. Just to remind you all that if you are clever enough to win, then you are rewarded by being asked to set the next year's event!

November saw another great Skittles evening organized by Cynthia and Norman Hiscock. As always, this event was well supported with, yes you've guessed it, supper and the bar.

Decembers Xmas party was such an enjoyable evening. Again The Hall Raisers band and many other talented local musicians entertained us.

We have had several table top sales and we have a quiz with 12 tables booked for March. Oh, and there will be a bar.

Having the bar is a great asset to the Hall and helps raise much needed funds. We now have a Mobil bar to hire out, too. Please contact Diane or Caroline to fine out more.



We have a new booking clerk Dianne Banger. (01425-4749570. She has taken over this critically important job from Ann Ramm, who has done this job for as long as we can remember. Thank you, Ann, for all your help and support over many, many years.

We have had 2 new solar lights put in the car park to make it safer and to encourage hall users to use it more at night. Please show some consideration to our Hall's neighbours when parking. Try not to park opposite entrance gateways, and try to keep noise to a minimum when leaving at the end of the evening.

Here is a list of our committee

Caroline Paul - Chairman

Imogen Fidler-Secretary

Katie Hughes-Treasurer

Ian Pinder-Caretaker

Dianne Banger-Booking clerk

Terry Pattisson-Advertising

Ann Ramm, John Eccles, Phil Emmel, Andrew Rawstron, Cynthia and Norman Hiscock, Steve Banger, Katrina West, Dan and Lizzy Shutler, Lucy Richmond (Moorlands Collage).

This year's Sopley Festival is on Saturday 9<sup>th</sup> July at The Old Vicarage and Owls Barn.

A very big thank you in advance to Kate White and Ron and Lizzy Lakey for their kindness in allowing us to use their properties to host this event. We want it to be even better than last year with a bigger attendance - so pass the word around. We rely on the good will and hard work of our community to put on this event, so please, if you would like to help why not contact any one of us. This is YOUR village and it needs YOUR support.

Thanks in advance for your help.

Caroline Paul,

Chair, Sopley Parish Hall Management Committee

# STEPPING STONES OF SOPLEY DAY NURSERY



*A happy and caring place to learn through play*

**NEW  
EXTENDED  
HOURS**

Stepping Stones of Sopley is a Day Nursery in a beautiful setting in the heart of Bransgore village.

We are open from 8am until 6pm for 50 weeks of the year, catering for children aged 2-4 years at present, but hoping to add a baby unit in the near future. There are options for children to attend term time only or full time, and we will also operate a holiday club. If you wish to have a look around, please do call us on the numbers below or have a look at our website:

**01425 673135 / 07867 521583**  
**[www.steppingstonesofsopley.co.uk](http://www.steppingstonesofsopley.co.uk)**

This year we are utilising our newly renovated upstairs room. It is used as a 'quiet room' so that our children who are starting school this year can have some focus time away from the younger children. Come and take a look! We have an amazing outside area, friendly supportive staff and a **GOOD** Ofsted report!



# WE NEED YOUR HELP!

We are a charity and run by a committee of parents and staff. This year the committee are planning lots of fundraising events. We will be at the Sopley Fete as well as the Bransgore Fun day.

We are also planning our own Family Fun Day, with lots of fun activities and treats for all the family.

Please come along and see us.

If you are interested in getting involved, please speak to Caroline or get in touch via Facebook.



Stepping Stones currently has over 40 different families using our setting, but we still have a few more spaces so please do get in touch.

Our staff are extremely creative and resourceful, so children are kept interested and absorbed in activities. They attend regular training courses throughout the year to inspire them and to keep up to date with current legislation and practices.

Find us on Facebook  
for regular updates



**Location:** Bransgore & Thorney Hill District Hall, Burnt House Lane,  
Bransgore, Christchurch, BH23 8DD  
**Contact:** Caroline Paul (Manager)  
01425 673135 or caroline.paul1956@gmail.com



## The Woolpack Inn

Many thanks to you all for your continued support. The village has a fantastic community spirit and with that in mind we are launching our community discount card this year. The idea is to get the locals to meet in their local and catch up. With more people moving to the village it will give them chance to introduce themselves over a few drinks here at the woolpack. The community discount card will be available for Sopley residents only and can be used to obtain 10% off drinks on Fridays from 4pm til 7pm.

The woolpack has had many successful events over the past year and has given us the encouragement to continue to provide great food, drink and entertainment.

The new Spring/summer menu is out now with plenty of seasonal delights.

We have open mic here the last Monday of the month starting at 8.pm.

In May we have a charity gig (details to be confirmed)

Sunday 14<sup>th</sup> August 12.30pm The Christchurch and Highcliffe brass bands will be playing in the garden

Please keep an eye out for future events.

**Anyone wishing to hold an event at the pub, please pop in and discuss your ideas. Tel: 01425 672252**

**Email: [info@woolpackinnnsopley.co.uk](mailto:info@woolpackinnnsopley.co.uk)**

## *A recipe from the Woolpack's Summer Menu.*

### Salt and Pepper Squid

#### Chilli dressing: -

3 whole (pips included) dried chillies  
50g palm sugar (soft brown can be used)  
2 squeezed limes  
125ml fish sauce



---

Oil for deep frying  
500g fresh squid (cleaned)  
11 white peppercorns  
1 heaped table spoon sea salt  
100g plain flour  
½ head of garlic peeled  
1 packet of coriander

---

#### Method

Heat a frying pan and add the chillies, cook until slightly brown in colour.

Place the chillies and the sugar into a pestle and mortar, then pound until it is all broken down.

Add the lime juice and the fish sauce and place to one side.

Prepare the squid by marking the inside of the squid being careful not to cut through.

Cut the squid into quarters

Crush the peppercorns, sea salt and flour in a pestle and mortar.

Chop the garlic

Put the chopped garlic into hot oil until it floats to the top, then remove the garlic and place on a paper towel.

Heat the oil to 190oc

Put the squid through the flour, coating well and place in the hot oil. The squid will curl and go golden brown when cooked.

Take the squid out and put onto kitchen towel

Put together the squid, garlic and chopped coriander and finish with the dressing.



## St Michael and All Angels Church - Mill Lane, Sopley

There has been a hive of activity at the Church over the past year, which is still continuing. You are cordially invited to come along and see for yourselves, either by attending any of the variety of services (see box below), or simply by taking some time out to visit our wonderful Saxon Church building and its serene and charming grounds.

A great deal of effort and care have been placed into physical improvements, including entrance gates and pillars, the porch entrance, an extended secure pathway, a lovely garden with new memorial seat, and two new outdoor notice boards. We thank all those who have helped us here, especially our **PCC, Friends of Sopley Church**, volunteers from **Moorlands College**, the community service workforce and our own regular helpers, including our wonderful flower arrangers!

Co-operation and integration with other Sopley groups are important to us, and we have supported the Sopley Village Festival, liaised with members of the **Parish Council** and used the **Village Hall** and **Sopley Mill** for functions - the latter for which we are grateful to **Mr. Benton Jones**. We have seen an increasing number of marriage ceremonies performed at the Church - perhaps a reflection of the warm and friendly welcome extended to all of our visitors. Currently we are in a sustained period of interregnum, though now at an advanced stage in the appointment of a new priest.

So far, the highlight of our year has been the news that we have been granted permission to restore the wonderful Victorian mural that is above the Chancel Archway. This is thanks to the enterprise and tenacity shown by the **Friends of Sopley Church** - about whom you can read elsewhere in this magazine.



Our Regular Services:	1st Sunday/month -	08:00 Said Eucharist   11:00 Matins
	3rd Sunday/month -	11:00 Sung Family Eucharist
	Every other Sunday	11:00 Sung Eucharist

Finally, you are invited to our **Band Concert** with tombola, stalls, tea and cake and other refreshments, on **Saturday 10 September 2016**, from **2.00pm**. This great family event will be held in the grounds of the **Clock House Cottage, Derritt Lane, Sopley**, by courtesy of Dr. and Mrs. R Dunnill. We look forward to seeing you there!

# Art Lessons in Sopley

with Maxine Marsh

Classes are run from my studio. Please visit [www.maxmarsh.co.uk](http://www.maxmarsh.co.uk) or contact me [max@maxmarsh.co.uk](mailto:max@maxmarsh.co.uk) 01425 673851



Students at work in the studio

These small and friendly art classes of up to 6 students allow for lots of one to one teaching. Whether you're new to painting or more experienced this is the perfect environment for you. Watercolour, basic drawing skills, coloured pencils and pastels are all taught. Lessons teach perspective, colour theory and composition, providing a solid platform on which students can develop their individual style.



Lessons are held on Mondays and Thursdays, 3 sessions on each day.  
**NEW CLASS THURSDAY EVENING 7.00-9.00**



**Sopley Parish Council**

Upcoming Sopley Parish Council meetings, please note these are Council Meetings held in Public not a Public Meeting.

19/05/16—7.30pm AGM Annual Assembly.

16/06/16—7.30pm Finance Meeting

21/07/16—7.30pm Meeting

15/09/16—7.30pm SPC Meeting

17/11/16—7.30pm Finance Meeting

24/11/16—7.30pm SPC Meeting

19/01/17 – 7.30pm SPC Meeting

16/03/17—7.30pm SPC Meeting

18/05/17—7.30pm AGM Annual Assembly.

Agendas and Minutes are available at [www.sopley.gov.uk](http://www.sopley.gov.uk)

# PASSPORT PHOTOS

**Printed to Passport Office standards on high quality glossy photo paper while you enjoy a cup of tea or coffee in comfort.**

**Very reasonable prices with family discounts:**

**One person £5.00, two people £8.50,  
three people £12.00, four people £15.00.  
More than 4 for just £3.50 per person.**



**Photos taken at my Bransgore home.**

***Call Richard on 01425 674611***



Your local authentic Spanish Catering company, now providing so much more than delicious paella for house, dining hall and garden parties, weddings and festivals...

Enquiries to:  
Emma Lopez  
Idelica Ltd  
Willow Cottage  
55 Ringwood Road  
Avon  
BH23 7BG

Visit our new-look website at  
[www.idelica.com](http://www.idelica.com)

- Like our page on Facebook (Idelica) or follow us on Twitter (Emma\_Idelica)
- To buy El Avion paella seasoning, paprika and other ingredients visit our ebay shop (Emma's Paella Deli)
- 

Find us at these local events: Milford Food Festival (April), The Quomps at this year's Christchurch Food Festival (May), the Hampshire Wedding Festival at New Park Brockenhurst (April), Fleet Food Festival (May), Gay Pride Bournemouth (July) Dorset Chilli Festival in Wimborne St Giles (July), Chilli Fiesta in Midhurst (August).



## Testimonials:

We wanted to thank you for serving some truly delicious food on Sunday, everyone was raving about it!

**Mhairi and Joe, Wedding at Sopley Mill , May 2015**

Thank you so much for all the incredible food. It was beautiful and delicious and everyone is still talking about how amazing it was. You and the team were top notch perfect, we couldn't have been happier with the service you provide.

**Kaela and Paul, Wedding at Sopley Mill, May 2015**

Thank you so much for being part of our day, it was perfect :-). Many of our guests commented on how lovely both your food and all the staff were. You even got my grandad eating antipasti which is no small task given how he usually sticks to a Sunday Roast! It was really exactly what we were looking for and it all tasted amazing. The whole process from designing the menu to the day itself could not have been better and we would not hesitate to recommend Idelica to all of our friends and family.

**Hayley and Liam, Wedding at Sopley Mill, July 2015**

I have had nothing but compliments about your paella - several people had 2 or even 3 platefuls! It tasted really good, rice was perfect consistency, servings were huge and it was satisfying without being too heavy/filling.

**Joanna and Paul, Wedding at Burley Park, July 2015**

The smell as the food was being prepared and served also added to the theatre of our event, which was just what we wanted. The staff that were supporting you were absolutely delightful. Nothing was too much trouble – and once the evening began they second guessed our requirements which really took the pressure of us. It was a great party and much of that was down to Idelica.

**Diana and Steve, Wedding in Ringwood, Sept 2015**

We booked Idelica to cater for a party of 60 people in September 2015 and would not hesitate to recommend them. We were delighted with the friendly efficient service. Emma was able to offer a lovely choice of Paellas to cater for every taste and the Churros with Chocolate Sauce for dessert were very popular. We had a thoroughly memorable evening.

Thank you!

**Naomi, Farewell Party in Neacroft, Sept 2015**



**SOPLEY  
PARISH  
COUNCIL  
ANNUAL  
GENERAL  
MEETING &  
ANNUAL  
ASSEMBLY 2016**



**THURSDAY 19th May 2016 at 7.30pm in the Parish Hall**

After the conclusion of a brief session of formal business, the Annual Assembly provides an opportunity for Parishioners to raise for general discussion, any matters or suggestions that may be of concern or interest to the wider community. The meeting will then be addressed by our guest speaker, Jeff Pickseley, who will be giving a talk on the local area. Light refreshments will be available after the presentation.



**MOT CENTRE . REPAIRS . SERVICING . DIAGNOSTICS  
AIR-CON . WELDING . BRAKES . CLUTCHES . EXHAUSTS  
FRIENDLY SERVICE FROM YOUR LOCAL FAMILY-RUN GARAGE**

Opening times Mon - Fri 8:00 to 17:30 Sat 8:00 to 12.30.

Telephone: 01425 673696 Fax: 01425 674440

email: [sopley.garage@btconnect.com](mailto:sopley.garage@btconnect.com) [www.sopleygarage.co.uk](http://www.sopleygarage.co.uk)

# The Fortune Centre of Riding Therapy

Registered Charity Number 1045352



 founded 1976

On 16<sup>th</sup> November this year (2016) the Fortune Centre of Riding Therapy (FCRT) will celebrate its 40<sup>th</sup> anniversary! Plans are well underway for special activities and events to celebrate the Ruby Anniversary and they will be advertised on the FCRT website.

As you may be aware the FCRT is dependent for all capital funding on the generosity of its many friends and supporters. One exciting project for this year is a fundraising target for the refurbishment of the roof over the indoor school at the Avon Tyrrell site. Unfortunately, it is beginning to show its age and specialist attention is required!

At Wootton Hall Farm, Weekly Riding Therapy provides an opportunity for local children with special needs to receive Equine Assisted Therapy on a weekly basis. The indoor school surface has recently been upgraded and new machinery has been purchased to maintain it. These things are only possible through the support of donations and fundraising efforts, which are all greatly appreciated.

An FCRT supporter recently wrote: "Since 1976 the FCRT has transformed the lives of many hundreds of children and young people and their families and guardians. Through involving them with horses, many of them have changed from sad, socially isolated and misunderstood individuals who are frightened and extremely vulnerable, to being far happier young people who have made friends for the first time. They are more confident and safer and can begin to lead much more normal lives within the community. Nobody knows exactly how many young people might potentially benefit from the FCRT approach but it's unquestionably thousands from every part of the United Kingdom".



Open Day Thursday 12<sup>th</sup> May 2016

40<sup>th</sup> Anniversary Open Day Thursday 20<sup>th</sup> October 2016

The Fortune of Christmas Tuesday 20<sup>th</sup> December 2016

Telephone: 01425 673297 ~ [www.fortunecentre.org](http://www.fortunecentre.org)



# “Vintage Tea Afternoon”

To be held at

“Smugglers” Sopley BH23 7AY

(if wet weather in Sopley Parish Hall)

Sunday, 5<sup>th</sup> June 2016 - 2pm – 5pm.

All funds raised will be be donated to  
St Michael’s & All Angels Church, Sopley Flower fund.



*Donation of flowers or funds for the Church Flowers all gratefully received.*

*£3.50 to include Tea and homemade cake.*

*Tickets in advance from*

*Dee 07766 523907 or Katrina 07749 622070*

# THE BLUESTOCKINGS

VINTAGE VOCAL HARMONIES



All your 1940s and 1950s favourites from this vintage style vocal trio - combining the tight harmonies of a bygone era with sassy choreography and a swinging style!

To enquire about The Bluestockings, or make a booking

Email [info@thebluestockings.co.uk](mailto:info@thebluestockings.co.uk)

Or call 07502 142346



## News from Avon Tyrrell Estate

This year has seen much activity in the woods with extensive thinning in Whistlers and Peckhams Firs. Replanting is well underway. This year we are experimenting with some mesh tree shelters which are designed for ease of weed control and to maximise growth. Hopefully they will also withstand the attention of the local deer population!

The rebuild of 83 Bennetts Lane, named Stillman's Cottage in memory of the previous long term owners, has been completed.

Next on the list is 54 Ringwood Road where we have planning permission to replace the existing dwelling with a compact three bedroom cottage set slightly further back from the road.

This year has been 'all change' at the New Queen. Hall and Woodhouse have moved on and Lorraine and Will Everingham have taken over. They have already carried out an extensive internal refurbishment and the quality of the food and beer is much improved. With the cooperation of English Nature, many of the trees behind have been cleared opening up spectacular views of the water meadows.

Regular footpath walkers will have noticed that the scale of Fawley Farms' pig operation has been reduced although they retain a significant presence on the farm.

On the River Avon we enjoyed an unusually successful year catching 18 salmon (all returned to the river) with an average weight of just over 13 lbs - our best year since 1988.

It seems that this annual roundup would not be complete without a mention of water. At the time of writing we have had one flood in Ripley but fortunately no serious damage. The relief ditch from Fish Street towards Court Lane was in full flow, as was Deep Ditch and the new overflow ditch (from the Brook opposite 21 Ripley) into the irrigation reservoir. Further thought is been given to what else can be done to improve the situation.

*Willie Manners*



## ***Friends of Sopley Church***

### **FRIENDS OF SOPLEY CHURCH**

The Friends of Sopley Church is a charity which was set up in 1979 with the purpose of raising funds to help keep this beautiful church in good order. We have a small committee and at present about 90 members, if anyone would like to become a member then please contact me on 01425 672755 for further details it costs just £5 a year. We hold social events throughout the year to raise funds and everyone is welcome at these you don't need to be a member, just come along.

The following events have been arranged:-

Saturday 12<sup>th</sup> March 7pm – Skittles – Sopley Village Hall

Saturday 4<sup>th</sup> June 12 Noon – Summer Lunch – Thorney Hill  
Community Centre

Saturday 1<sup>st</sup> October 7pm – Quiz Night – Sopley Village Hall

Saturday 3<sup>rd</sup> December 10.30am – Sherry & Mince Pies – Old  
Vicarage Sopley

All events are advertised on the Parish notice boards so keep a look out for further details and also on [www.sopley.gov.uk](http://www.sopley.gov.uk) website.

Jackie Gibson (Secretary)

# Sopley Primary School

## News from Sopley School

Thank you for being given the opportunity to contribute to the Sopley Parish newsletter.

Sopley is a special community and we are very grateful to everyone who supports our school - listening to children read and helping in the library, helping children to enjoy sport and French, contributing to the fete, sharing local history - there are many more examples and too many individuals to name.

Like very many schools, we are considering how to respond to the challenges of tighter funding, rising expectations and new school structures. We have explored various options and have consulted stakeholders on a proposal to form a governance federation with another local school of similar size and character, Burley Primary school (decision pending - announcement due by 3.5.16). Details are on our school website <http://www.sopleyprimaryschool.org/governors/new-ways-of-working/>

Some of you will already be aware that headteacher Martin Sheret is retiring in summer 2016. Martin has successfully led Sopley School with great enthusiasm and commitment - he will be fondly remembered for his passion for providing rich and diverse learning experiences for our children, his open approach, his love of the outdoors and for championing 'hands on' learning.

Sadly, soon after announcing his retirement, Martin began a period of extended sick leave. Our acting headteacher is Mrs Sarah Veal who had already been working alongside Martin and has been at the school for many years. Mrs Veal and the staff have worked really hard to continue to move the school forward and ensure that the children are progressing with their learning.

Martin, and now Sarah, lead a school where children are appreciated as individuals and can develop a firm foundation from which to achieve good things. Sopley School considers the development of the 'whole child'; the values of the school remain strong and are a very important part of helping our children to become good citizens and leaders of tomorrow.

Reflection I can:	Independence I can:	Co-operation I can:
Reflect on my feelings and how others might feel	Explore, investigate and solve problems	Listen and take turns
Reflect on my behaviour	Sort out what I need	Learn with others
Reflect on what I have done well and what I need to improve	Have a go by myself	Show respect to everybody
Reflect on my own learning	Stick at it and do my best	See when I am wrong and say sorry
<b>I am proud of my achievements</b>	<b>I am proud that I can do it</b>	<b>I am proud of my relationships</b>

There are plenty of challenges along the way for our children and young people - the expression that 'it takes a village to raise a child' is old wisdom but, with technology and media becoming a larger part of most families lives, children are exposed to an ever greater range of influences, many of them rich and stimulating but some of which may conflict with our hopes for how our youngsters will develop and mature.

The Department for Education expects all schools to "promote the fundamental British values of democracy, the rule of law, individual liberty and mutual respect and tolerance of those with different faiths and beliefs" - so what does this look like in practice?

I leave the last words to the children who worked with Martin Sheret to develop a statement of what they wanted from Sopley School .....

*"We want it to be a safe place where children can be trusted to be sensible, because everyone follows the class charters and the rules for a Happy School. We want everyone to be honest, have good manners and to treat people and possessions with respect.*

*We want to be proud of our work and try our best every day, so we do well with our learning. We will keep going when things are challenging and listen carefully to each other. We want to find out interesting and useful things about the world.*

*If everyone can do this we will remember the great time we had at Sopley, with our friends, for the rest of our lives. "*

Hear, hear!

Linda Mail Chair of Governors

**Diary date:** You are warmly invited to join us at the Sopley School Fete on 25<sup>th</sup> June!

## Norman Hiscock MINI EXCAVATOR WORK—Fully insured

- LANDSCAPING
- GRAVEL DRIVES
- DITCHING (LOW RATES)
- DRAINAGE
- SITE CLEARANCE
- HOUSE FOOTINGS—OVERSIGHTS
- 3 TON AVAILABLE

**26 Ripley, Nr Christchurch,  
Dorset 01425 674206**



**Local beekeeper, based on Dorset/Hampshire border**

## Swarms collected in Dorset & Hampshire

## Local honey for sale

**Local nucs & queens often available, April to October**

Thinking of keeping bees? Introductory sessions from just £20.00



*Call Zaz on* **0794 - 1220201**

**01425 - 672520**

## Household glass collection



My week colour is

My collection day is \_\_\_\_\_

	April 2016						
	M	Tu	W	Th	F	S	S
Yellow					1	2	3
Purple	4	5	6	7	8	9	10
Green	11	12	13	14	15	16	17
Blue	18	19	20	21	22	23	24
Yellow	25	26	27	28	29	30	

	May 2016						
	M	Tu	W	Th	F	S	S
Yellow							1
Purple	2	3	4	5	6	7	8
Green	9	10	11	12	13	14	15
Blue	16	17	18	19	20	21	22
Yellow	23	24	25	26	27	28	29
Purple	30	31					

	June 2016						
	M	Tu	W	Th	F	S	S
Purple			1	2	3	4	5
Green	6	7	8	9	10	11	12
Blue	13	14	15	16	17	18	19
Yellow	20	21	22	23	24	25	26
Purple	27	28	29	30			

	July 2016						
	M	Tu	W	Th	F	S	S
Purple					1	2	3
Green	4	5	6	7	8	9	10
Blue	11	12	13	14	15	16	17
Yellow	18	19	20	21	22	23	24
Purple	25	26	27	28	29	30	31

	August 2016						
	M	Tu	W	Th	F	S	S
Green	1	2	3	4	5	6	7
Blue	8	9	10	11	12	13	14
Yellow	15	16	17	18	19	20	21
Purple	22	23	24	25	26	27	28
Green	29	30	31				

	September 2016						
	M	Tu	W	Th	F	S	S
Green				1	2	3	4
Blue	5	6	7	8	9	10	11
Yellow	12	13	14	15	16	17	18
Purple	19	20	21	22	23	24	25
Green	26	27	28	29	30		

Ensure your box is out by 7.00am on collection day and contains glass bottles and jars only  
For more information phone customer services on 023 8028 5000 or visit [newforest.gov.uk/glass](http://newforest.gov.uk/glass)



## **All Saints Thorney Hill**



**Are hosting a Tea Party within the  
Church grounds**

**on 11th June 2016**

**between 2pm and 4pm**

**to celebrate the Queen's 90th birthday, so do come  
along and join in.**

**Posters with more information will be displayed locally nearer the date.**

**It is hoped that a concert by Quattrio  
will also be held during the evening of the 11th June 2016.**

---

**Also throughout the year the Church will be open to visitors every  
Saturday afternoon between 2pm and 4pm. This grade I listed Baroque  
Church was built in 1906 and has an interesting history along with the  
acclaimed mural painted by Phoebe Traquair.**



Bransgore  
Community  
First Responders



**BRANSGORE COMMUNITY FIRST RESPONDERS**  
**Registered Charity No. 1049778**

**Bransgore, in the New Forest, Hampshire**

Our team of 13 have had a busy year. In 2015 we were available for over 6800 hours. That's equal to 19 hours every day. Not bad considering our volunteers are unpaid. They make themselves available to serve the local community by providing a 999 life support response while the ambulance is still on way.

We attended a number of 999 calls in Sopley and surrounding area and assisted patients before the arrival of the ambulance, ensuring their wellbeing and care. In addition to



providing our service, we have been spreading the word about what we do, trying to get additional volunteers and being interviewed by local radio stations. We supported the ambulance service by providing additional cover on nights which we knew would be busy at Christmastime and New Year. Our volunteers have learned new skills.

We have also been able to donate a couple of life saving defibrillators and security cabinets for use by the public if needed. These "public access" defibrillators save lives. over 300 people a day die from sudden cardiac arrest. In cases of cardiac arrest for every minute that passes without defibrillation a patient's chances of survival decrease by between 10% and 14%. And they are easy to use with no specialist training. That's why they are appearing in many rural villages where ambulances may find a fast response to be challenging as well as busy places where lots of peoples of all ages may be about. The last two we donated have been at Bransgore Village Hall and Thorney Hill Community Centre.(Photo) We have also advised Burton, New Milton, Milford, Ringwood and Highcliffe who have all now installed publicly access defibrillators.

As we have no responder volunteers from Sopley we are keen to recruit caring and compassionate individuals who are over 18, have use of a car and are willing to offer a minimum of 20 hours a month being on call in case a 999 call is received. The hours are flexible to suit your lifestyle and until required for the call you carry on with your life as normal. We have regular meetings and training nights, and of course attend local events when we have enough volunteers. It's not for everyone but if you want to know more why not call us on 0844 500 9699 and have a chat.

Our website is [www.bransgorecommunityresponders.org.uk](http://www.bransgorecommunityresponders.org.uk) and we have a Facebook page too.

## Sopley Farm Pick Your Own

Open between May and October, and with fruit and vegetable fields in both Derritt Lane, Sopley and on the A35 near the Cat and Fiddle Inn at Hinton, Sopley Farm supplies a wide range of delicious local PYO and ready-picked soft fruit and in-season vegetables including their prized Sopley asparagus - the 2016 harvesting of which will shortly be underway!

SopleyFarmPYO, Derritt Lane, Sopley BH23 7AZ Phone 01425 672451



\*\*\*\*\*

## Sopley Salads

Dennis and Zhivka Tanner grow a wide variety of seasonal vegetables and salad crops on their farm in Priest's Lane, Sopley. They sell their produce direct to the public through the local farmers markets network - including Christchurch Market on Mondays and Wimborne Market every Friday.

Sopley Salads

Badgers Farm, Priests Lane, Sopley

Phone 01425 674150 Email: [sopleysalads@btinternet.com](mailto:sopleysalads@btinternet.com)



\*\*\*\*\*

## The Woolpack Inn.

Occupying a landmark thatched cottage situated at the heart of Sopley village, the Woolpack is a cosy 17th Century Inn steeped in fascinating history. At the Woolpack you will find a welcoming atmosphere, with friendly staff serving generous portions of home-made food from an innovative and varied blackboard menu with daily specials. Inside are two beamed bar areas and a light and airy conservatory dinning area overlooking the stream. Outside is a delightful terrace garden, just perfect for lazy summer days.



Contact The Woolpack Inn Sopley Hampshire BH23 7AX

Phone 01425 672252

Email: [info@woolpacksopley.co.uk](mailto:info@woolpacksopley.co.uk)

Website: [www.woolpackinnnsopley.co.uk](http://www.woolpackinnnsopley.co.uk)

\*\*\*\*\*



# avontyrrell

The UK Youth Outdoor Activity Centre

**OUTDOOR ADVENTURE  
ON YOUR DOORSTEP!**

**CAMPING & LODGES  
GO ADVENTURE DAYS  
DROP IN ACTIVITIES  
FAMILY EVENTS  
BIKE HIRE & TRACKS  
CAFÉ EXPLORE  
BOULDERING WALL  
TRIM TRAIL  
ADVENTURE PLAY AREA**

Follow us...



Want to work locally?

Check out our job opportunities

Avon Tyrrell, UK Youth Outdoor Activity Centre  
Bransgore, Hampshire, BH23 8EE

01425 672347 [info@ukyouth.org](mailto:info@ukyouth.org) [www.avontyrrell.org.uk](http://www.avontyrrell.org.uk)

**ukyouth**   
Positive About Youth

## News from Moorlands

“That’s full of priests, isn’t it?!” My colleague’s barber wasn’t alone in his view of Moorlands College. Many people drive past our grounds every day, travelling through Sopley to reach Christchurch and vice versa, unaware of what goes on beyond our historic entrance. In fact, the majority of commuters don’t even know we’re here, nestled in such a tranquil setting.

Thankfully, life at Moorlands is anything but sleepy and monastic. Our whole purpose is to train and equip people, of all ages and backgrounds, to know more about God and--as a result--go out and have a positive impact on the Church and the world. After all, what benefit would it be for our students (and staff, for that matter) to have the great news of the gospel--Christ’s answer to the world’s questions about purpose, loneliness, pain, relationships, and so much more--only to keep them stored up like first aid supplies in a safe? Truly loving people means we mustn’t--can’t!--keep these things to ourselves.

And so our students can be found serving the community around Christchurch, throughout the New Forest, toward the tips of the UK, and even across the world. And, of course, in Sopley. Despite our global outlook, we value our neighbours greatly. As a token of appreciation, Moorlands’ Student Council are intending to run the successful Sopley Clean Up again this year. Every autumn, our students offer practical services, such as litter picking the river bank and cutting back overgrown shrubs and trees. If this could be helpful to you or a neighbour of yours, please do get in touch.

And we are always happy to welcome you onto the campus, to see these things for yourself. Come and have a look around our brand new community Hub, and dramatic 300-seater Auditorium. Find out what our 235 or so Sopley-based undergraduate and postgraduate students get up to. Even quiz us on the Christian faith! Just phone ahead on 01425 674500 and we’ll be delighted to make you welcome. We’ll even provide you with some directions, should you need help finding us.

Many thanks

Neil

-----  
Neil Tinson  
Marketing Manager  
-----

Moorlands College, Christchurch  
Dorset BH23 7AT  
United Kingdom  
-----

T. +44 (0)1425 674500  
<http://www.moorlands.ac.uk>  
-----

Company Number 4241702  
Registered Charity 1092000

Taking on the role of full time acting head teacher of Sopley Primary School has been tinged with sadness due to the absence of Martin Sheret, a mentor and colleague of many years. However, it has also been an exciting time full of interest and new opportunities. To my great delight it has enabled me to listen to, and work alongside, children and staff from reception to year 6 in a different capacity.

We have welcomed three new members of staff to the team and have been working together as a whole school to re-visit our Sopley Learner values in the context of the new curriculum and revised national expectations. It has been my pleasure to see the children across the school actively thinking about how they act, and react, in a variety of situations. Whether learning in the classroom, sharing time in the playground, or out on an educational visit linked to their current topic, I have seen our Sopley Learner values in action.

The snippets below give a flavour of some of our recent activities and events. The enthusiasm and energy of our children, staff and governors has made for some rich and engaging learning experiences which it is my privilege to share with our local community through the Sopley Parish Newsletter.

Mrs Sarah Veal - Acting Head Teacher

**The Sopley Learner celebration tea parties** are held each half term for children chosen as being good role models within their classes and the whole school.

Children, from different year groups, enjoy eating and drinking together and the governors are pleased to celebrate and talk to the children about their learning and interests.

Congratulations to all those who were invited to take part.



**Juniors' Trip to Beaulieu Motor Museum** Class 2 went in search of answers to historical questions about transport and were treated to a spin in one of the vintage cars.

The children thoroughly enjoyed their learning and we were especially proud when the Beaulieu staff praised the children for their attitude and interest.



**Infants' Trip to Moors Valley** There is nothing quite like looking for mini-beasts with a group of very excited four and five year olds.

The children found lots of different creepy crawlies and were very careful to make sure they looked after them well and returned them to their homes.



Some of the older children enjoyed sharing their pond dipping and bug identification skills. It took quite a bit of patience and determination to make an interesting collection of pond life, but the children stuck at it. Well done!

The newts were the most popular find, and the most elusive.



After lunch it was time for the children to let off steam. They all had a fantastic time playing together and looking out for each other.

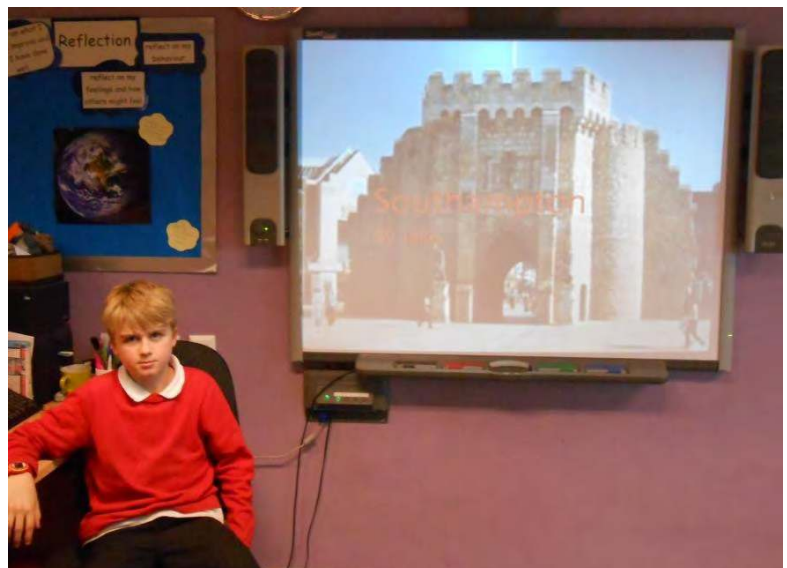
**Juniors' Trip to Southampton** I was fortunate enough to accompany class 3 on a visit to Southampton. Together we walked the ancient walls and discovered a lot of interesting facts about the history of the city. Then to bring us right up to date with the Southampton of today, we were invited to visit the Medina Mosque. It was good for the children to appreciate the strict codes observed in the mosque. As always our children behaved impeccably.



The dome in the prayer room at the Medina Mosque.

**Celebrating Home Learning** The children have been very creative in the projects they have worked on at home and shown great pride in their work.

Showcasing design and technology skills - a brilliant model which was made as part of home learning about Southampton's shipping heritage.



Good use of ICT - sharing home learning on Southampton as a PowerPoint presentation.



A small part of the **Dramatic Dinosaur Exhibition** showing some of the imaginative dinosaur models, including eggs and nests.

*Brenda Atkinson, Community Governor writes ....*

Parents/Grandparents and Governors were delighted to be invited to Years 1 and 2's **Dramatic Dinosaur Exhibition**. A purple dinosaur shaped invitation offered "loads of cool fossils and amazing challenge books" plus "a surprise". Who could resist?

The fossils and clay model dinosaurs were amazing. There was a whole island, full of colourful dinos to reinforce our knowledge of their habitat and tastes. Monitors were conscientious in ensuring we all looked at but refrained from touching exhibits. The topic books showed enthusiasm, understanding and imagination.

Years 1 and 2 performed their dinosaur "Quel Dino?" song en francais! With actions to support the details of the size and activities of these green, blue, red and yellow four-footed monsters walking, flying and swimming!

In English we heard about the triceratops in their tree-house, with 800 teeth to keep the dentist at work all day; 9 meters long, with a railway carriage all to itself..... lucky him!

AND there was a magic puppet show with a fascinating script by a child in year 1.

All in all, a very successful exhibition full of impressive variety and interest.  
Well done to staff and children alike!



**Sopley School Football Team** coached by Ollie Melling, showing respect, good sportsmanship and teamwork during a recent victory.

Here looking happy and resplendent in their new kit for which we owe the Friends of Sopley School a big thank you.

**A 'blow by blow' account of a recent match written by two of our footballers.**

The game began and it was tough to start with but Sopley were soon pressing Burton into their own half with Jake running down the touchline and whipping a ball into the box for Rory to head. Unfortunately, the header skimmed the bar and went out for a goal kick. But Sopley didn't let it get them down and a few minutes later Brodie scored a brilliant goal to make the score 1-0, we were ecstatic. Burton looked a bit better but a few minutes later, we managed to slip another goal in as Jack scored a second for Sopley and made the score 2-0!

By half-time, Sopley led 2-0 and Burton needed to get back into the game. We were excited for the second half however maybe the half-time oranges did the trick because when the second half started Burton were a changed team.

The whistle blew and we were off, Burton began to get back into the game but Sopley's defence (Harry, Finn and Rory) held strong. And not before long, because Sopley were defending well, they got a 3rd goal, Brodie with another one. Sopley were cruising now and began to have a little fun. Jack got the 4th goal after some lovely inter-play with Brodie. This could be a battering for Burton... but they wanted to get at least one goal and almost did when their best player (Tim) hit the bar from a free kick! It was a breathtaking moment. Sopley finished the game with two outstanding goals. First Finn played a lovely one-two with Rory before slotting the ball into the back of the net. And then the second, in the dying moments of the game, Olly scored a volley to make the score 6-0!

Overall it was a wonderful and impressive performance from Sopley but not so much from Burton! To sum up, it's fair to say that Sopley left the pitch with their heads held high!

*Written by Rory Crum and Harry Burdock - Year 6*

# USEFUL NUMBERS, CONTACTS AND INFORMATION

## **Parish Councillors**

**Chairman\*** Daniel Shutler  
64 Fish St, Ripley, Bransgore  
Christchurch, BH23 8EU  
01425 673113

**Vice Chairman\***  
Cllr. Dee Dunn  
Smugglers, 8 Sopley,  
Christchurch, BH23 7AY  
01425 672709

Cllr. Andrew Rawstron  
17 Sopley, Christchurch,  
Sopley, BH23 7AX  
01425 672033

Cllr. Anj Hill  
Fist St, Ripley, Bransgore  
BH23 8EU  
07711 655529

Cllr. Teela Liberty-Spark  
The Woolpack Inn, Sopley  
BH23 7AX  
01425 672252

Cllr. Alan Pope  
Sopley Court, Sopley  
BH23 8EU  
07802 811616

Cllr. Carole Smedley  
Brook Cottage, Ripley BH23  
8EU  
07813 625611

\* The Offices of Chairman and Vice Chairman of the Parish Council for the coming year, together with the composition of the various Council Committees, are decided by Council vote at the Annual General Meeting of the Council—which will be held on **May 19, 2016** immediately preceding the Annual Parish Assembly.

**Website: [www.sopley.gov.uk](http://www.sopley.gov.uk)**

Parish Clerk  
Mrs Katie Hughes

Parish.clerk@sopley.gov.uk  
01425 674833  
07935 448405

## **Sopley Parish Hall (Bookings)**

Dianne Banger 01425 474957

## **Sopley School**

01425 672343

## **Stepping Stones—Pre-School**

Caroline Paul 07867 521583

## **St Michaels & All**

## **Angels Parish Church**

Liz Bishop 01425 672628

## **Your Hampshire County Council**

### **Representative is:**

### **Hampshire County Council**

Cllr Steve Rippon-Swaine 01425 477131  
Email [steve.rippon-swaine@hants.gov.uk](mailto:steve.rippon-swaine@hants.gov.uk)

### **Where can you find out more about the Parish Council?**

Parish Noticeboards are located in Sopley Village at the Parish Hall and in the layby adjacent to Sopley Forge, in Ripley next to the phone box/post box, in Avon by the old forge at the entrance to London Lane and in Ringwood Rd, Shirley next to Letterbox Cottage.

Parish Council Meetings are held every 2 months - usually on the third Thursday of the month - and are open to all Parishioners and interested parties. Meeting dates, venues and agenda details are posted on the notice boards and the parish website ([www.sopley.gov.uk](http://www.sopley.gov.uk)). The website also contains lots of useful local links to businesses, local authorities and community groups and organisations.