



# Newsletter 2018

## Chairman's Report 2018

Hello and welcome to this year's Newsletter.

I hope you have all had a great start to the year despite the recent heavy snow fall.

As a Council we continue to look at traffic issues around the village.

We are still looking for Speed watch scheme volunteers. Please contact Katie Hughes (Parish clerk) for more info.

We have a few options and actions that can be put in place which will be up for discussion at the next few meetings.

I would like to thank members of the community, Parish Councilors past and present and the Clerk for their support and hard work over the past year.

Also a warm welcome to our two newest councilors, Cllr Emmel and Cllr Eccles.

Dan Shutler Chairman  
(Sopley Parish Council)



Kelsey is very passionate about speeding in Sopley!

***All events are held at the Parish Hall unless otherwise stated and are subject to change.***

***Please keep an eye on the Parish Boards and website.  
[www.Sopley.gov.uk](http://www.Sopley.gov.uk).***

***Any queries please email [parish.clerk@sopley.gov.uk](mailto:parish.clerk@sopley.gov.uk).***

### **Upcoming Events:**

***Barn Dance 27th April 2018***

***Royal Wedding Party 19th May 2018***

***Car Treasure Hunt 3rd June 2018***

***Sopley Village Festival 14th July 2018***

# SOPLEY FESTIVAL

**Saturday 14<sup>th</sup> July 2018**

**Moorlands College 12–5pm**

**followed by live music outdoors at the Woolpack**



*Is it a village fete?*



*Is it a country show?*



*Is it a craft fair?*



*A music festival?*



*Or a family fun day...?*

**YES! Sopley Festival is all of these – and more!**

**Plus a dog show, live entertainment, activities and refreshments all afternoon**

It's organised by Sopley Parish Hall Management Committee to raise vital funds to complete the refurbishment of our much-loved and well-used Parish Hall.

We think it's a great event but don't take our word for it –  
here are a few comments from last year's visitors and exhibitors:

*“thoroughly enjoyed it”*

*“a lovely community feel”*


*“great atmosphere”*

*“absolutely loved it”*

*“such a lovely friendly feel”*

*“one of my favourite events of the year”*

**For more information**

 Sopley Festival  
Ann Ramm 01425 674668  
SopleyParishHall@gmail.com

**Stallholder enquiries**

SopleyFestival2018@gmail.com

**[www.sopley.gov.uk/sopley-parish-hall](http://www.sopley.gov.uk/sopley-parish-hall)**

Organised by Sopley Parish Hall Committee

Charity No. 1130934

All monies raised go towards the refurbishment of Sopley Parish Hall





parish.clerk@sopley.gov.uk  
Telephone: 01425 674833  
Mobile: 07935 448405  
www.sopley.gov.uk

All,

As already mentioned by Chairman Shutler we are still trying to get our Community Speedwatch Scheme off the ground. We need a minimum of six people to start the project and get the volunteers training started. I have the application forms and can print and send or email as appropriate please just let me know, my email is parish.clerk@sopley.gov.uk or call me on either of the telephone numbers above.

The next Sopley & Ripley Litter Pick is due to be held on 14th April 2018 I would like to thank everyone in advance for their help with this event, this will be followed by an informal gathering at the Woolpack Inn.



*Date for your diaries:  
Prince Harry & Meghan Markle Royal Wedding—19th  
May 2018 there is going to be a Garden party held at  
the Woolpack to keep up the Community spirit here in  
Sopley also this will be an opportunity to raise further  
funds towards the Sopley Parish Hall upkeep and  
ongoing refurbishment. Further details will  
follow as plans are finalised.*

If you wish to advertise any local events I am more than happy to print and advertise on the Parish Boards and the Sopley Village FB page. Just drop me an email, parish.clerk@sopley.gov.uk.

The Council continues with a healthy bank balance and we were in 2017 and 2018 able to donate funds to the Parish Hall Refurbishment Project. If anybody would like to have a look at the proposed plans and offer their services please contact me.

The Annual Sopley Festival will be held at Moorlands College on Ringwood Road after the fantastic success of last year's event. I look forward to seeing you all there on 14th July 2018. 12 until 5pm with lots of Craft stalls, Live Entertainment, bars, BBQ's Dog Show's, tea and coffee and cakes stalls.

In the evening there will be live entertainment and food from 7pm in the grounds of the Woolpack Inn.

Katie x

[www.sopley.gov.uk](http://www.sopley.gov.uk)





## Annual Sopley/Ripley Spring Clean 14th April 2018

Many thanks to all of the Parishioners who helped with the Annual Litter Pick on Saturday 8th April 2017 last year.

It was a great turnout again and a lovely dry sunny day for it, thanks also to the lovely people who helped in the background and ensured the rubbish collections were appropriately placed and then collected by NFDC.

Thanks also to the Woolpack for letting us congregate in their lovely pub garden after the litter pick.

**Next year's Litter Pick date is pencilled in for 13th April 2019  
so please make a note in your Diary.**

[www.sopley.gov.uk](http://www.sopley.gov.uk)

### *D.SHUTLER FENCING & EQUESTRIAN CONTRACTORS*

FENCING ~ MENEGE CONSTRUCTION  
MUCK HEAP REMOVAL ~ Paddock MAINTENANCE  
HEDGE CUTTING ~ HAY & STRAW



01425 673113

07870404513

[danshutler@aol.com](mailto:danshutler@aol.com)



## SOPLEY VILLAGE WI

Sopley Village WI has enjoyed a fun packed year, we meet on the 3rd Tuesday of the month, usually at the Sopley Village Hall, Priest Lane.

Monthly meetings have been enthusiastically attended by an increasing membership this year who have made new friends, socialised, drunk tea, coffee, wine and ate sumptuous cakes.

2017 activities included demonstrations from Tropic Cosmetics, Julia Carpenter Pottery and ceramics, Sally Mackness—Home furnishings., Ukelele playing, a tour with cream tea at Moorlands Bible College, a Harvest Festival Service at St Michaels and All Angels Church, Sopley held by Reverend Nigel Lacey, Antique talk and Valuations by Mr Ozier, Christmas Decoration and participation by our own Sharyn Oliver also a Christmas party catered for by the Woolpack and held at Sopley Parish Hall.

Members were encouraged to show off their skills, even find talents they didn't know they had in the New Forest Show in the WI Tent, 2017 with the "Recycle, Renew and Refresh" theme.

We continue to support village events as a WI, we again had a very successful bottle tombola at the Summer Festival which was held at Moorlands College for the first time. WI member's with friends and members supplied many cups of tea and cakes to members of the public.

This year promises to be as interesting and busy, with this years programme available (on the next page) and plans for the Sopley Festival to be held on 14th July 2018, 12 until 5pm.

Our social summer BBQ in July and a Christmas Fayre on 24th November 2018 at Sopley Parish Hall with craft stalls, afternoon tea and entertainment being planned to which you are all invited.

**DO PLEASE LOOK AT THE PARISH NOTICBOARDS FOR OUR MEETING TOPICS OR  
WEBSITE [WWW.SOPLEY.GOV.UK](http://WWW.SOPLEY.GOV.UK)**

All local ladies are welcome for find out more and come along for a "taster" evening, which a £4.00 charge is payable.

The Annual Membership is £41.00, for more information contact Trish or Katie.

**Chairman Trish Powell: 01425 672503 or [Trishp24@hotmail.com](mailto:Trishp24@hotmail.com)**

**Secretary Katie Hughes: 01425 674833— [parish.clerk@sopley.gov.uk](mailto:parish.clerk@sopley.gov.uk)**

**Find out more about the Women's Institute go here: [www.thewi.org.uk](http://www.thewi.org.uk)**

## 2018 DIARY

### SOPLEY VILLAGE WOMEN'S INSTITUTE



Meetings held in  
Sopley Village  
Hall,  
Priest Lane,  
Sopley  
BH23 7BA

3<sup>rd</sup> Tuesday each  
month

7.00pm-9.00pm

Visitors pay  
£4.00 per  
meeting

Jan 16<sup>th</sup>

Feb 20<sup>th</sup>

Mar 20<sup>th</sup>

Apr 17<sup>th</sup>

May 15<sup>th</sup>

Jun 19<sup>th</sup>

Jul 17<sup>th</sup>

Aug 21<sup>st</sup>

Sep 18<sup>th</sup>

Oct 16<sup>th</sup>

Nov 20<sup>th</sup>

Dec 18<sup>th</sup>

Meeting including our vote on 2018  
Resolutions

Alice May "Accidental Damage"

Community Responders – Mike Jukes

New Forest Show Introduction.

AGM – Beekeeping followed by  
WI AGM Business

Talk by "The Gardening Lady"

Summer BBQ at Barbara Pope's home.

Social Evening at Party Hut, Mudeford Beach.

Talk by Carole Smedley re Crufts.

New Forest Agister.

Christmas Decorations – Sharyn Oliver

Christmas party – further details to follow.

#### President:

Mrs Trish Powell  
01425 673521  
Trishp24@hotmail.com

#### Secretary:

Mrs Katie Hughes  
01425 674833  
Parish.clerk@sopley.gov.uk

Committee may change at the  
Annual Meeting in May 2018.

For more information about the  
WI:

National Federation:  
[www.thewi.org.uk](http://www.thewi.org.uk)

Hampshire Federation:  
[www.hampshirewi.org.uk](http://www.hampshirewi.org.uk)





Derritt Lane, Sopley, BH23 7AZ  
4th Sunday of the Month, April to October 2018  
10am to 1pm

Sellers from 8.30am and **STRICTLY NOT BEFORE PLEASE**

22nd April, 27th May, 24th June, 22nd July, 26th August, 23rd September, 28th October

Cars £5/Vans £8

(NO CATERERS PLEASE) - Homemade Refreshments Available

**Further information: 07812 555516**



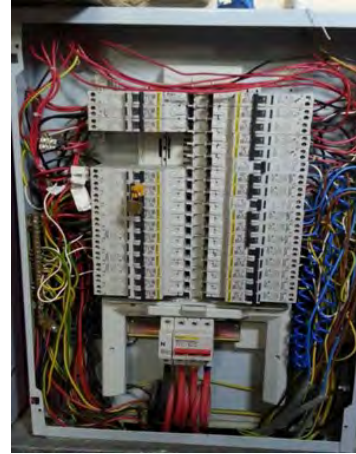
**Upcoming Sopley Parish Council meetings,  
please note these are Council Meetings held in  
Public not a Public Meeting.**

7.30pm	Thursday, 17 <sup>th</sup> May 2018	AGM & Annual Assembly
7.30pm	Thursday, 21 <sup>st</sup> June 2018	Audit Approval Meeting
7.30pm	Thursday, 19 <sup>th</sup> July 2018	SPC Meeting
7.30pm	Thursday, 20 <sup>th</sup> September 2018	SPC Meeting
7.30pm	Thursday, 15 <sup>th</sup> November 2018	Finance Meeting
7.30pm	Thursday, 22 <sup>nd</sup> November 2018	SPC Meeting
7.30pm	Thursday, 17 <sup>th</sup> January 2019	SPC Meeting
7.30pm	Thursday, 21 <sup>st</sup> March 2019	SPC Meeting
7.30pm	Thursday, 16 <sup>th</sup> May 2019	AGM & Annual Assembly

**Agendas and Minutes are available at  
[www.sopley.gov.uk](http://www.sopley.gov.uk)**

# Your local Sparky!

- \*Rewires, full or partial, no job too small (or too big!)
- \*Regularly work on farms, stables, barns, outbuildings etc.
- \*External wiring to gardens, ponds, outbuildings, gazebos, etc.
- \*Thatched, listed and period properties a speciality
- \*Full inspection and testing to City & Guilds 2391 for property pre-sales and pre-purchase
- \*Inspection & testing reports for insurance company requirements
- \*Fault-finding
- \*Security lighting
- \*New supplies installed, underground & catenary (overhead)
- \*Full £2M public liability and public indemnity insurance
- \*Part P registered all work guaranteed
- \*Many years experience working for leading aerospace and defence companies worldwide
- \*References available, mostly from local households and businesses



**Telephone Zaz on 0794 1220201.**

**Email: [avon-power@sendemailhere.co.uk](mailto:avon-power@sendemailhere.co.uk)**





# **Sopley Parish Hall Annual Report 2018**

I can't believe it's time for yet another annual report from Sopley Parish Hall. The last year seems to have flown by without respite, with community activities coming at us month after month in rapid succession.

We have again tried throughout the last twelve months to provide a varied programme of events for all sections of our community which have included: Beer & Skittles, Car Treasure Hunt, Beetle Drive, Bingo, and most recently a record breaking Quiz Night with an amazing fifteen teams and a staggering seventy four participants! We should raise our hats to the Melling family for setting this year's questions and helping to make the evening a really great success. As usual, it is always a pleasure to catch up with all our old friends from Sopley Parish at these events, but in addition this year we seem to be attracting many families from Burton, Winkton, and Bransgore too – along with a whole host of new comers from Heatherstone Grange. It was great to see all of you. We need to crack on with our plans for the remaining Hall extension and restoration. We're running short on space!!!

The Sopley Festival 2017 was another record breaker in every sense – record attendance, record number of stalls, and record financial proceeds – all of which go to the Hall restoration fund. This time the event was split between two locations, with the day time event hosted in the grounds of Moorlands Bible College, and the musical evening concert held in the beer garden at the Woolpack Inn. Massive thanks are due to both establishments for helping us to stage what has now become the premier summer social event in Sopley's calendar.

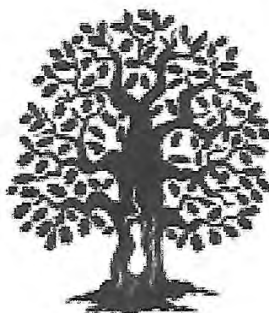
The Sopley Christmas Party was another tremendous success - very well attended and great fun with live music provided, once again, by our own House Band, The Hall Raisers. In the light of the Sopley Festival concert, and with the forthcoming St Patrick's day concert looming, we have to say a big thank you to the Hall Raisers for providing musical entertainment at our local functions, helping us to raise much needed funds for our Hall restoration project. Well done, and thank you to Chas Rowden, Phil Emmel, Ron Lakey, Siobhan O'Neill, Teela Liberty-Spark, and John Eccles – helped along by numerous other musicians from far and wide who have been coerced into performing for us along the way. Thanks, too, to Dee at the Woolpack Inn, who is slowly becoming a part of the Sopley Parish Hall catering wing!

As usual, sincere thanks to all our committee members for their efforts throughout the year enabling us to run the Hall. We are all truly lucky to live in a vibrant rural community.

Caroline Paul

Sopley Parish Hall management Committee.

# SOPLEY FESTIVAL



## *Volunteers!*

### *Thank you ...*

Sopley Parish Hall Management Committee would like to take this opportunity to thank all the unsung local heroes who helped make last year's Festival such a success, by giving anything from a few minutes to many hours of their time.

Along with staff & students from Moorlands College, the team at the Woolpack Inn and members of Avon Valley Young Farmers Club and the WI, these include:

**Penny Barris, Liz Bishop, Paul & Kathy Bramley, Shirley Bull,  
Gerwyn Davies, Dee Dunn, Daniel Eccles, Ray Hiscock,  
Sharon & Steve Jones, Maggie Laidlaw, Emma Lane & family, Jacque Lay,  
Janet Long, Mark Melling & children, Janet & Richard Mitchell,  
Chas & Lizzie Rowden, Gilly & Ian Searle, Lizzie Shutler.**

And these are just some of the ways they helped before, during or after the event:

Putting up gazebos	Guiding stallholders to their pitches	Staffing the gates
Selling raffle tickets	Serving teas & ice creams	Running the children's games
Taking down gazebos	Litter picking	Dismantling temporary fencing

***But we think there are many more people out there who could help in one way or another in 2018. If you're one of them and would like more information, please get in touch now using the contact details below.***

***We would love to hear from you!***



Sopley Festival   Ann Ramm 01425 674668   [SopleyParishHall@gmail.com](mailto:SopleyParishHall@gmail.com)

***Members of the 2017 cleanup team take a well-earned break***





**SOPLEY  
PARISH  
COUNCIL  
ANNUAL  
GENERAL  
MEETING &  
ANNUAL  
ASSEMBLY 2018**



**THURSDAY 17th May 2018 at 7.30pm in the Parish Hall**

After the conclusion of a brief session of formal business, the Annual Assembly provides an opportunity for Parishioners to raise for general discussion, any matters or suggestions that may be of concern or interest to the wider community.

The meeting will then be addressed by our guest speaker Mike Wildeman who will be joined by Douglas Bader's Son from the "Bader's Bus Company" Aerobatic Team.



**MOT CENTRE . REPAIRS . SERVICING . DIAGNOSTICS  
AIR-CON . WELDING . BRAKES . CLUTCHES . EXHAUSTS  
FRIENDLY SERVICE FROM YOUR LOCAL FAMILY-RUN GARAGE**

Opening times Mon - Fri 8:00 to 17:30 Sat 8:00 to 12.30.

Telephone: 01425 673696 Fax: 01425 674440

email: [sopley.garage@btconnect.com](mailto:sopley.garage@btconnect.com) [www.sopleygarage.co.uk](http://www.sopleygarage.co.uk)



## Rural Broadband Services in Sopley Parish.

In the past couple of years, the up-grading of the BT Exchange in Bransgore and the installation of a new fibre-enabled distribution cabinet in Sopley village has dramatically improved access to fast broadband services in some parts of the Parish. Despite these improvements, around 140 households – mostly scattered across Avon, Ripley, North Ripley and Shirley - remain unable to receive a fast broadband signal via their BT phone lines. Early in 2017, a small group of residents produced and circulated a questionnaire to all of these slow-broadband households to try to gauge if there would be enough support to petition BT Openreach to install additional fast-broadband distribution cabinets across the Parish under a grant-aided 'Community Fibre' programme. The response to the questionnaire demonstrated overwhelming support for the idea but, after several frustrating months of correspondence and meetings with BT Openreach representatives, it became apparent that BT had already decided that the estimated cost of the required infrastructure upgrade (which they calculated to be around £200,000!) was too high to proceed. Undeterred, the residents working group set about investigating a range of alternative solutions including community satellite, fibre and wireless broadband options.



In late summer, fate intervened in the form of a well established Bournemouth-based wireless internet service provider 'Juice Broadband' who notified us that they were just about to expand their network service into the lower Avon valley, transmitting to and from one of the aerial masts on St Catherine's Hill. Wireless broadband is an increasingly attractive alternative to fibre cable / copper wire services and there are already more than 50 village communities across Hampshire and Dorset who are successfully using it. It can provide a fast, reliable and cost-effective service, but to function effectively it is essential to have a clear line of sight between the transmitting station and the receiving equipment (usually a small, roof-mounted dish aerial) at each subscribing property. This is not always easy to achieve in a flat, partly-wooded area like the Avon valley but reception difficulties can be overcome by installing additional relay transmitters on taller buildings (barns, grain-silos, church towers etc) to eliminate reception black-spots.

Following the initial contact from Juice Broadband, we jointly undertook a series of site surveys - one of which involved a hair-raising ride 30 metres above the ground in the basket of a cherry-picker - during which we established those areas where householders would have a clear line of sight to the St Catherine's Hill mast and others (notably Ripley village) where a relay signal would be needed. Further contact with local residents confirmed rapidly growing interest in the project and in early September a few householders with a direct line of sight to the main aerial mast signed up as pioneer subscribers. Here in Ripley, we identified a suitable location for a simple relay station – essentially a small dish aerial and a unidirectional stick antenna mounted on top of a redundant telegraph pole – and by late November the Juice team had installed and activated our very own wireless broadband hotspot. Once connected, the difference in internet service speed was astonishing – homes that had previously struggled with speeds of less than 1mbps via the BT infrastructure were immediately getting a minimum 30mbps signal and were able to explore the wonders of Netflix and the BBC iPlayer for the first time – as well as making use of the fast and reliable connections for online banking and shopping transactions.

In the very short period of time since going live, the service has proved to be both reliable and popular and Juice have already connected 25 households in the local area. Customers using the service (myself included) have found the line speeds to be very consistent, there have been no outages (even through the short periods of extreme weather this winter) and contract costs seem to compare very favourably with 'wired' internet service suppliers like BT. Juice Broadband offer three standard packages for home users - ranging in price from £25.00 to £49.00 per month depending on the line speed and data allowance required - and each package includes the facility to make telephone calls over the wireless network.

For households willing to forgo the comfort blanket of a BT Landline, switching to the Juice telephone service can save the £18.99 monthly connection charge from BT – and it is possible to carry across and continue to use your existing 01425 home phone number. Residents that currently have a very slow (<2mbps) wired service are also eligible to claim a installation grant of up to £350 (paid by Central Government and administered by Hampshire County Council) to cover the cost of setting up the wireless service. To date, all of the installation grant claims from this area that have been processed by HCC appear to have been successful and we are not aware of anyone having an installation grant application refused.

Moving forward, the main purpose of this article is to publicise the availability of the fast wireless broadband service from Juice to any households that are not yet aware of it. Owners of properties with a good line of sight to either the main transmitter on St Catherine's Hill or the small relay mast in Ripley can make direct contact with Juice Broadband to discuss package and installation options. Even if you already have a fast service agreement with BT (or another provider), Juice may still be able to offer a cheaper or more reliable service. If you are interested in the Juice Broadband service but do not think that your property has a line of sight to either transmitter location, please let the Juice team know – as they will explore alternative relay options with our working group to see if there might be another way of getting the service to you.

Lastly, in respect of BT Openreach, we haven't given up on them altogether despite their disappointing response to our initial approach. We have since been informed that there may be an option to install one additional fast fibre distribution cabinet in the area at a relatively low cost (around £30,000 – most of which could be offset by government grant) and we are continuing to pursue this possibility so as to be able to offer residents a choice between cabled and wireless services in years to come.

If you have any further questions arising from this article, please e.mail us at [ripleyfastbroadband@btinternet.com](mailto:ripleyfastbroadband@btinternet.com) . Should we lack the expertise to respond to your query directly, please be assured that we will forward it on to more technically proficient colleagues and contacts who will get back to you.

*Gerald Lewis* - on behalf of the Ripley Fast-Broadband Steering Group.

A promotional graphic for Juice Broadband. It features a stylized illustration of a house with a red roof and a blue sky with clouds. A large blue signal tower is positioned next to the house. The text 'get connected...' is at the top left, and 'prices start at £25 per month!' is at the top right. The 'Juice broadband' logo is prominently displayed in the center. Below the logo, it says 'providing Superfast Broadband internet connections using innovative wireless technology...'. A list of bullet points follows: '• No need to dig up roads or pathways, our service is delivered by radio', '• Locally based ISP & friendly support', '• FREE install with Basic Broadband Voucher available in your area', '• Fibrelike performance', and '• No phone line required saving up to £18.99 per month!'. At the bottom, it says 'Interested in upgrading to Superfast? We are expanding to your area, express your interest and get connected today call 01202 332331 or visit juice-broadband.com' and 'email superfast@juice-broadband.com'.

## ***Friends Of Sopley Church***



The Friends of Sopley Church is a charity which was set up originally by Rev Alan Sessford in March 1977 for the purpose of raising funds to help maintain our beautiful church, it has grown over the years and has enabled us to fund several projects. Last summer we finally saw the completion of the mural restoration above the Chancel arch, it has been a long time but well worth the wait as it looks amazing. We have a small committee and at present about 90 members. We hold social events through the year to raise funds and everyone is welcome at these you don't have to be a member. All the events are displayed on the Parish notice boards as well as online. We feel it's so important to preserve our lovely old church but we need your help, becoming a member of the Friends costs just £5 annually so if you would like to join us please get in touch with Rosi our Treasurer on 01425 614560 or e-mail [rosemarymoynihan6@talktalk.com](mailto:rosemarymoynihan6@talktalk.com)

The following events have been arranged for the coming year and we would love to see you.

**Saturday 2<sup>nd</sup> June** -12 noon - Summer Lunch –  
Thorney Hill Community Centre.

**Friday 14<sup>th</sup> September**—7pm Harvest Supper –  
Sopley Village Hall

**Saturday 8th December** 10.30am – Sherry & Mince  
Pies – The Old Vicarage Sopley

*Jackie Gibson (Secretary)*





The Woolpack Inn

Many thanks to you all for your continued support.

The woolpack has had many successful events over the past year; it was lovely to see in the New Year with so many of you participating in the curryoke, who knew Sopley had so many talented singers, thankfully some were in disguise.



Quiz night has proved very popular and Tuesday nights have a great community turn out, it is really good to see all of the locals joining together and having fun. If you're interested in coming along and taking part it's on a Tuesday at 8.30pm it's only £1 per person to play and teams no more than 6.

For those budding musicians or those of you that like to listen to some up and coming talent we have open mic here the last Monday of the month starting at 8pm.

The Christchurch and Highcliffe brass band played in the garden last August the beautiful sounds could be heard across the village, they also came along to play Christmas carols on the evening of our grand Xmas draw. We will be welcoming them back for the summer garden event on the 19th August they will be starting at 12.30pm

We have been attending the Sopley village fair with our stall selling our homemade bar snacks, pork pies, sausage rolls, crackling and scotch eggs, along with vegetarian snacks and will continue to do so this coming summer.



This was the first year we held Sopley village festival in the garden of the Woolpack with Teela, John and Chas holding the main event, it was a great success and we look forward to this year's event..

The new Spring/summer menu, will be available soon with plenty of seasonal delights, our exciting breakfast menu has proven to be a hit along with the additional nibbles section.



With the local people of Sopley as our focus you play your part in giving us the encouragement to continue to provide great food, drink and entertainment.



Some amazing buffets this year that have been tailored for the individual customer requirements along with group BBQ's





THE WOOLPACK INN			
Dog Menu			
Created by The Village Pet Shop			
BRAINTON			
Dog Main:-		Eat in	Take Away
1	Lily's Kitchen- Slow Cooked Lamb Hotpot	£3.20	£2.20
2	Lily's Kitchen- Fishy Fish Pie with Peas	£3.20	£2.20
3	Natures Menu- Duck with Plum	£3.50	£2.50
4	Natures Menu- Venison with Blueberry	£3.50	£2.50
5	Symple- Turkey with brown rice, (puppy)	£3.00	£2.00
6	Symple- Lamb with brown rice, (senior)	£3.00	£2.00
Treats:-			
1	Antlers		£7.00
2	Fish 4 dogs- Sea Jerky		£3.50
3	Peanut butter filled Hyde ring		£4.50
4	Pooch n must training treats		£3.00
Travel Essentials:-			
1	Ball Launcher		£4.00
2	Space Lobber		£4.00
3	Eco Friendly poo bags (60)		£3.00

The Woolpack continues to be dog friendly offering a menu for your best friend. We have been working closely with Jens village pet shop for quite a few years now and have built up a great working relationship.



Christmas was a great success getting fully booked in record time. We already have Christmas day bookings for 2018 so if you wish to join us give a call to avoid any disappointment.



Our special's change daily offering a wide range of seasonal produce and on Sunday lunch we offer two roasts including beef, pork or you can mix them and have a bit of both.



We stay close to the originals of a pub food still offering the traditional fish and chips along with pies using only fresh cod fillets and homemade pies.





We have a 20 strong team, some of which are local villagers. We are proud of what they bring to the Woolpack making it a very successful village country inn. Working alongside of the team there is Dee, Teela and Woolie the pub dog.

Please keep an eye out for future events.

Anyone wishing to hold an event at the pub, please pop in and discuss your ideas. Tel: 01425 672252

Email: [info@woolpackinnsopley.co.uk](mailto:info@woolpackinnsopley.co.uk)

[www.facebook.com/TheWoolpackInnSopley](https://www.facebook.com/TheWoolpackInnSopley)

[www.woolpackinnsopley.co.uk](http://www.woolpackinnsopley.co.uk)



## *Recipe from the Woolpack*

### *Sausage rolls*

Makes 24; - Puff pastry:-250g strong flour, 225g butter, Pinch salt, 150ml water

Filling:-1kg sausage meat, 1 egg, 50g Dijon mustard

Method,

Mix the flour in a food processor with the salt slowly adding the water, when all has come together chill in the fridge. Roll out the dough into a rectangular shape approximately 3mm thick, cut up one third of the butter and place on two thirds of the pastry folding the none buttered third over the top of the pastry and the next third over the top then chill. Repeat this process three times adding the butter to each layer until it has all been used, chill and rest



the pastry. This is easier to buy from the shop.

Roll the pastry out to a rectangle 3mm thick, put the sausage meat into a piping bag and cut the end to a inch thick whole. Pipe the mix in three lines onto the pastry makeing sure you reach each end and ensuring there is enough room between to over lap each roll. Using a pallet knife put a layer of dijon mustard on the top of the sausage meat. Cut the pastry leaving a gap next to the sausage meat , egg wash the excess pastry and fold . pinch the join together and trim of any lose pieces, score the top with a knife and wash with egg. Cut into equal size, place on a baking try and bake in the oven for 30mins at 180oc making sure the pastry is crisp and the meat is cooked.





## St Michaels & All Angels Church, Sopley



Dear Friends and Parishioners,

It is always a pleasure to write something for the Parish Magazine. When I think of the church of St. Michael and All Angels at Sopley two things spring to mind. The first is the stillness and holiness of this ancient place of worship. It reminds me very much of the *line in T S Eliots 'Little Gidding'*:

*If you came this way,  
Taking any route, starting from  
anywhere,  
At any time or at any season,  
It would always be the same: you  
would have to put off  
Sense and notion. You are not here  
to verify,  
Instruct yourself, or inform curiosity  
Or carry report. You are here to kneel  
Where prayer has been valid.*



This poem could have been written for Sopley. It is as if the prayers of the people down the years have stuck to the walls in some way that just cannot be explained.

The second thing is how friendly the congregation is. We are a mixed bunch of people who consist of those who have been coming for years, those of us who have more recently moved here, a smattering of locals and wedding couples who attend here in order to be married in this special place. It is a wonderful mix which gives St. Michael's a unique dynamic. Our life revolves around a regular pattern of worship on a Sunday (for details see our website [www.burtonsopley.com](http://www.burtonsopley.com)).

As the church is open each day we are often visited by those who just want to 'inform curiosity' or to find a bit of space and peace. All are very welcome to try the door and to step inside. Offer a prayer for others but don't forget to offer one for yourself as well. You might even like to try us on a Sunday.

With Easter blessings

Revd Nigel Lacey



# SOPLEY PRIMARY SCHOOL BH23 8ET



## SUMMER FETE

**12-3pm SATURDAY 30th JUNE 2018**

So much more than a school fete, this is a community event for all in Sopley and the surrounding Parishes

- Music and arena events throughout the afternoon
- Childrens Entertainer & Bouncy Castle
- Lovely stalls to buy and play games
- Tombola & Grand Draw Prize



DETAILED POSTERS WILL POSTED AROUND THE PARISH IN MAY

**PLEASE ADD THIS DATE TO YOUR DIARY**  
FUNDS RAISED GO DIRECTLY TO THE SCHOOL'S CHILDREN THROUGH  
THE PARENT AND FRIENDS ASSOCIATION - "FRIENDS OF SOPLEY SCHOOL"

Offers of help and donations for the fete are to be directed to  
Friends of Sopley School

**IF YOU WOULD LIKE TO PURCHASE A PITCH PLEASE CONTACT**

Helen Whalley - [helen-whalley82@hotmail.co.uk](mailto:helen-whalley82@hotmail.co.uk) (Chair of FSS)

Yvonne Child - [mikeyvonnechild@yahoo.co.uk](mailto:mikeyvonnechild@yahoo.co.uk) (Secretary of FSS)



## BRANSGORE COMMUNITY FIRST RESPONDERS

Registered Charity No. 1049778

By the end of 2017 our team had been "on-call" for 7300 hours, that's about 83% of every day in the year. We attended several hundred emergency calls in that time throughout Bransgore, Burley and Sopley and I am pleased to report that we had some successful interventions in a number of cardiac arrest related calls. Minutes really do count in such cases and that's why we are always seeking additional volunteers in our areas who can be with a patient within perhaps four or five minutes of a 999 call, well before the ambulance gets there.



We now have two volunteer responders based in Sopley. Barry has just joined the team and with Jon will provide responder cover for our operational area. Would you be interested in joining? We just ask for a minimum of 20 hours a month of your time being available to help if required. All training and uniform is given and the work is really rewarding.

We were able to attend a few events to promote what we do, but had to decline others as our priority must always be to

have a responder on call wherever possible. We also helped New Milton to set up a community first responder scheme for the benefit of their community.

Through our colleagues in Heartstart Bransgore- New Forest, we offer the BHF Heartstart Course for FREE! This two and half hour session teaches you how to deal with a breathing, but unconscious person, a person who is not breathing / in cardiac arrest, someone with a suspect heart attack, someone choking and a person with serious bleeding all of which are potentially life threatening without appropriate intervention. Simple Skills that Save Lives.

If interested in the free training, or if you wish to learn more about what is involved in becoming a community first responder, please leave us a message on 0844 500 9699,

E Mail [bransgorecfr@sca-charity.org.uk](mailto:bransgorecfr@sca-charity.org.uk) or visit our website at [www.bransgorecommunityresponders.org.uk](http://www.bransgorecommunityresponders.org.uk).





According to experts on aging and longevity, the first humans expected to live to age 150 (since ancient times, at least) are already alive. That's a lot of candles to squeeze onto a cake. As a college, we'll be celebrating our 70th anniversary later this year. Admittedly, compared to a lifespan of 150 years, 70 doesn't get us 'over the hill' yet. In fact, we're not even near the summit. And compared to other institutions, like the 922 year-old University of Oxford, we're a mere infant.

Nonetheless, reaching a 70-year milestone in biblical and theological training is something worth celebrating. We started life as Matlock Bible College in Derbyshire, in 1948, with just eight students. One year later, and with student numbers increasing, the college relocated to Dawlish, Devon. The word 'Matlock' was replaced with 'Moorlands' in the college's title, inspired by the fact the area surrounding the new premises included Dartmoor and Exmoor (and it conveniently kept our acronym unchanged). We relocated to our present site in Sopley some 21 years later, in 1970, and have been blessed with growth ever since. As well as our main Sopley campus, Moorlands College now runs three regional centres in the South West, Midlands and South East, too—training hundreds of short course, BA and MA students from across the UK and beyond.

What hasn't changed in all that time is our focus on *applied* theology: helping our students to put what they learn into practical use. Even in the early days, our students were given medical training—covering minor surgical procedures, basic medicine, and obstetrics—in response to the needs of post-war missionaries working in remote areas of the world. Naturally the challenges and opportunities we face now, in a 'post-truth' culture, are very different to those of 70 years ago. Our students may not be so well versed in the use of balms and bandages as they once were, but their heart to impact a suffering world with the good news of the Gospel, and the timeless truth of the Bible, hasn't dwindled.

Whilst some might be tempted by the speed and convenience of online courses ('Surviving the Coming Zombie Apocalypse' with Michigan State University, anyone?), or to skip HE training altogether and save some money in the short term, we know there'll always be a place for sound, rigorous training that equips people spiritually, practically, intellectually, and relationally. We're not just about education, but transformation—and that definitely *is* a life-long investment.

Neil Tinson

Marketing Manager, Moorlands College

Moorlands College, Christchurch BH23 7AT

01425 674500

<http://www.moorlands.ac.uk>





# The Fortune Centre of Riding Therapy

Registered Charity Number 1045352

Telephone: 01425 673297 ~ [www.fortunecentre.org](http://www.fortunecentre.org)

The Fortune Centre of Riding Therapy (FCRT) is Registered Charity, which operates over three sites. Avon Tyrrell is the main site for the college where young people with learning difficulties and social, emotional and behavioural problems are able to develop skills in literacy, numeracy, living and working independently, making friends, taking responsibility and growing in self-awareness. The results of learning and working with horses bring long-term benefits and a positive impact to the individuals and communities. The FCRT is included on the Secretary of State's List of Independent Specialist Providers and many of the students look forward to being able help in the local community.

Students are resident at Wootton Hall Farm and on the Avon Tyrrell site. Lanfranco House in Burley is the home of young people ('Associates') who are on open ended placements and the FCRT also holds weekly sessions at Wootton Hall Farm, Tiptoe.

The weekly riding therapy sessions at Wootton Hall Farm provide physiotherapy, educational opportunities and outdoor exercise for local children with complex needs. The sessions would not be possible without outstanding local support, especially from dedicated volunteers who work alongside the horses and staff during term time.

During college breaks other groups of children and young people with high needs benefit from equine based opportunities for education and therapy.

**Please come to Open Day on the 10<sup>th</sup> May and see for yourself... Tel. 01425 673297.**



**RAISE MORE FOR US**

**JUST BY SHOPPING ONLINE**

# THE BLUESTOCKINGS

VINTAGE VOCAL HARMONIES



All your 1940s and 1950s favourites from this vintage style vocal trio - combining the tight harmonies of a bygone era with sassy choreography and a swinging style!

To enquire about The Bluestockings, or make a booking

Email [info@thebluestockings.co.uk](mailto:info@thebluestockings.co.uk)

Or call 07502 142346





## News from Avon Tyrrell Estate

The main building project that has been occupying the Estate is the repair and refurbishment of the Old Schoolhouse and adjoining former classrooms in Sopley.

These are being converted into three holiday lets.

The building has an interesting history. The earliest map of sufficient scale to show the site in any detail is that of Sopley village and adjacent lands, probably from the late 18th century. It shows the plot containing a single building adjacent to, and running parallel with, Mill Lane.

The Tithe map of 1838 shows that a new building had replaced the earlier, this time aligned at right angles to the road. The accompanying apportionment records that the building was a “charity school” occupied by R. Keen. The school itself was actually first constructed in 1833 as a Church of England National School.

The dwelling house is said to be occupied by the school’s master and mistress, presumably Mr. & Mrs Keen.

An extension westwards to the front section of the building is shown on the 2nd edition 1:2500 Ordnance Survey map of 1898, which also marks the appearance of the existing brick and timber outbuilding to the rear. It remained a school until 1944, when it was converted into estate workers cottages by the Estate. Mrs Abrey, who died recently, had lived there since 1945.

During the course of the works a number of skeletons were uncovered. Expert advice confirms that they are of mediaeval origin and they will be interred in the Parish’s graveyard.

On the forestry front there has been some additional timber extraction in Whistlers. A new shelter belt of trees has been planted stretching from Curry Pond Bridge across to Martin’s Lane. I am looking forward to watching it grow in the coming years and I have no doubt that it will form an attractive part of the landscape.

On the river there was a reasonable run of salmon. Eight were caught with an average weight of 13.8 lb. The largest was 24 lb. All returned to the river alive.

Harvest went reasonably smoothly with slightly better yields than expected. Like most industries the uncertainty created by Brexit is worrying and every comment of Mr Gove is subjected to detailed analysis.

On a happier note the arrival of the broadband service operated by Juice Broadband beamed across from Saint Catherine’s Hill is beginning to enable remoter parts of the Parish to receive a decent service.

*Willie Manners*



UKY | AVON  
TYRRELL

# Outdoor Adventure on your doorstep

Adventure Activities  
Outdoor Fundays  
Family Events  
Bike Hire & Tracks  
Cafe Explore  
Camping  
Lodge Breaks

UK YOUTH



Avon Tyrrell Outdoor Centre  
Bransgore, Hampshire, BH23 8EE  
01425 672347 | [info@ukyouth.org](mailto:info@ukyouth.org) | [avontyrrell.org.uk](http://avontyrrell.org.uk)



## Sopley Primary School

Sopley Primary School is a friendly place where children are happy and parents are welcomed. Our small size means we get to know our children – and their parents – well, and can care for their unique needs.

As always, it has been a busy year so far! We thought we would share just a few of the highlights...

### Sopley Pupils Join the Fight Against Cancer

Our pupils added Cancer Research UK's Race for Life to the timetable as we held our first whole school 'Race for Life' event on our school playing field. Children aged from four to eleven years old joined forces to take on cancer and walk, jog or run either a 1k, 3k or 5k or complete an obstacle race in aid of Cancer Research UK's life-saving work. The children raised over £2200; we were so proud of their team spirit and determination!

### Outdoor Learning Resources

The husband of our new Head of School, Elizabeth Knowles, has been incredibly busy building and donating a fabulous mud kitchen for Rabbits Class! The children are thoroughly enjoying their new learning area which is part of the school's on-going outdoor learning enhancement project. Mud pies anyone?



### Friendship Hut

**Bransgore Rotary Club** kindly donated **£1,500.00** towards our amazing friendship hut!

It has provided our children with an essential quiet base during lunch and breaks. The children have commented on how much they are enjoying spending time together in this new, special place.

**THANK YOU TO THE ROTARY CLUB!**

### Our Fantastic New Play Trail!

At the start of the autumn term, we had to say a huge thank you to **AFC Bournemouth Cherries Community Fund** who kindly donated **£1,000** towards our new play trail equipment! As always, we were also incredibly grateful to the 'Friends of Sopley School' who raised funds and organised the installation of this fabulous play equipment which is now enjoyed by all!





### Harvest

In October, we held our annual harvest festival! The children and families donated a superb array of goods which were gratefully received by the Christchurch Food Bank.

### Children in Need

Children at Sopley were covered in spots for Children in Need! They took part in many activities and raised over £128 for this worthy cause. Well done to all our children for thinking of those who may be less fortunate than they are!



### Sopley Primary School Open Morning

We held an Open Morning on Wednesday 29th November from 9.30-11.30am. We were delighted with the number of potential new parents who attended, making extremely complimentary comments about our wonderful school. They loved the school's family feel, welcoming atmosphere, the beautiful, extensive grounds and were really impressed with the way in which the school is progressing.

### Shoe Box Workshop

We had a 'shoe box workshop' on Wednesday 1st December, during which all the children of Sopley School worked together to provide gifts for disadvantaged children. These were expertly packed in shoe boxes by our Badgers' Class, meaning that many children would receive Christmas gifts of pens, pencils, hair accessories, hats, gloves, note books and much more! We were delighted to beat our target of 51 boxes (one between 2 children) and made 65 in school during the workshop! This, combined with the 53 boxes made by our children at home, meant we reached a very impressive total of 118 boxes! Bransgore Rotary came to collect the boxes on 1st December (they had trouble fitting them all in the car) and were, once again, delighted with how many we were able to provide.



### Dogs' Trust Workshops

As part of their 'Be Dog Smart' campaign, on Friday 1st December, the Dogs' Trust visited our school and held workshops in all four classes. 'Be Dog Smart' helped our children and families understand more about how to behave around dogs in order to keep themselves safe. We were pleased to take part in this as we know how important it is to keep our children safe in and out of school.





### Care Together Christmas Party

Just before Christmas, we took our talented Sopley Choir to Bransgore to sing at the Care Together Christmas Party. We received a lovely 'thank you' from Care Together, praising our pupils for their beautiful, confident singing and their professionalism. Their clients, and our children,

thoroughly enjoyed the event and over £400 was raised for the Hampshire and Isle of Wight Air Ambulance. Being part of the local community is very important to all at Sopley School.



### Nativity

The Infants brought the barn down with a fabulous nativity production to end 2017. The children and families all enjoyed an action-packed story, filled with upbeat singing and dancing.



### Christmas Challenge and Scavenger Hunt



Many of our children and families undertook an exciting Christmas challenge and scavenger hunt. The children did exceptionally well in finding so many items, from old and foreign coins to clothing. All of these items are now part of our rich and authentic resources, enhancing children's daily learning in school.

### Year 5 Bikeability

Personal Best Education provided bikeability training for our Year 5 children during the week commencing 29th January 2018. We



were extremely proud of all of our children who passed Level 1 of this important safety training.

### Enhancement Time

Sopley children now engage in many exciting activities as part of our new 'Enhancement Time', which takes place every Friday afternoon for 45 minutes. Every child across the school chooses an enhancement activity they are interested in. These include: calligraphy, learning to play the recorder, cosmic yoga, paper crafts, sewing, clay modelling, multi-sports and dramatic story-telling. The children love learning new skills in this special time each week!

### Our New Trainer and Welly Stores!

We are delighted with our new trainer and welly stores, funded by the 'Friends of Sopley School' and built by one of our talented parents! These are a fantastic addition, supporting children in transitioning between inside and outside and enabling us to enhance opportunities for outdoor learning.



### The Fantastic 'Friends of Sopley School'

During the last year, this amazing group of dedicated volunteers raised an amazing figure of £8,304.45 for the children of Sopley School.

We are **SO** grateful for the tremendous support, hard work and dedication shown by the FSS, which is integral to the school. The amazing amount of funds raised and lovely events across the year truly adds value to the children's lives. The funds continue to develop the school and resourcing for the children, with our pupils having an active voice in how the money is deployed.

### Pupil Survey

Our aim is for Sopley children to enjoy school – being happy is the key to good learning and progress! All of our children recently completed an online 'pupil survey'. We thought you would like to hear some of the children's comments:

*'I know I am doing well because I am always doing challenging work.'*

*'I feel safe in school because the teachers look after you.'*

*'The food is really good!'*

*'I love the whole school!'*

*'I love playing in the mud kitchen!'*

*'There is nothing I would change about Sopley School.'*

When our children are happy, we are happy!



Last year, the Friends of Sopley School had the idea to try to provide a hut in the playground where the children could get together during break times. However, the cost was such that it would take them some considerable time to raise sufficient

funds to enable the purchase and building to go ahead. In due course, they made use of the close links with Bransgore Rotary Club and made a presentation at one of the club meetings.

Bransgore Rotary Club was pleased to be able to help with a donation of £1500 and the hut – now called The Friendship Hut was purchased and built last term in time for the children to make use of it this summer. It has been a great success and has quickly become much loved by all the children.

Our photo of The Friendship Hut includes a group of children with members of the teaching staff, Friends of Sopley School and Bransgore Rotary Club.







At the end of May 2016 Sopley School entered into a new partnership - *The Federation of Burley and Sopley Primary Schools*. By bringing the schools together under shared leadership we build our capacity to seize opportunities, share good practice, and tackle challenges.

Our aims are simple, we want to continue to serve the families who value the experience that a small school gives to their children and help those children to do their best. Both schools are very proud of their own identity and heritage.

Many thanks to all who are involved in producing the Sopley Parish Newsletter for giving us the opportunity to share just a few items of news from Sopley School.

The Early Years classroom and outside areas have had a significant refresh over the past year. The transformation has been noted by external inspectors and we can see an impact on the excellent progress that the children are making with their learning.

Mrs Andrea Hodgson and Mrs Elizabeth Knowles joined the team in September as Joint Head of School Sopley. Andrea has extensive experience of working in a small village primary school, her area of expertise is teaching and learning in the juniors. Elizabeth is an Early Years specialist who worked as District Advisory Teacher across the New Forest and is passionate about learning outside the classroom. Both leaders have a weekly teaching commitment which means that they get first-hand knowledge of how the children are progressing with their learning.

From Easter we will be welcoming a new Executive Headteacher who will work across both schools. Helen Morris has a proven track record in running a successful primary school elsewhere in Hampshire. The governing body were impressed by Helen's energy, drive and ambition for our small schools. She has been coming in since Christmas to meet children and parents, and to work with staff and governors. Helen is looking forward to getting to know other members of the community in due course and we look forward to seeing the school thrive under her leadership. Helen will be continuing the journey that our interim Executive Headteacher, Fiona Adams, has pursued with such a strong sense of purpose, generosity, and vigour. We thank Fiona, for all that she has achieved and wish her all the very best when she returns to her substantive role at Hordle School after Easter - we hope to nurture the links that have been created.

The children continue to enjoy the unique range of experiences and opportunities that learning in a small school offers. This includes wonderful events such as the Easter and Christmas Fairs, and the Summer Fete, which bring the community together and raise funds to benefit the children. We would like to extend our appreciation to all the parishioners for their continued support.

"It takes a village to raise a child" is a very old saying, it is also the case that it takes a whole community to create a school in which its children flourish. THANK YOU to all the people who support Sopley School in so many ways.

Linda Mail - Chair of Governors - The Federation of Burley and Sopley Primary Schools





# The Federation of Burley and Sopley Primary Schools



**Ofsted 'Good' schools**  
with committed staff who  
help children to succeed  
with their learning



**Idyllic rural settings**  
beautiful grounds in the  
heart of the countryside  
and New Forest

**Burley Primary School**  
Church Lane, Burley,  
BH24 4AP  
[adminoffice@burley.hants.sch.uk](mailto:adminoffice@burley.hants.sch.uk)  
01425 403375  
[www.burley.hants.sch.uk](http://www.burley.hants.sch.uk)

**Are you looking for a  
different kind of  
school for your child?**



**Visits are warmly  
welcomed, we would love  
to give you a personal  
tour and answer your  
questions**



**One of our schools could  
be just the right place  
for your child  
Come and discover us!**



**Learning and developing  
within small community**  
each school has around  
110 children so everyone  
gets to know each other



**Closer than you think  
within a 10-15 minute  
drive from Ringwood,  
Christchurch, Hurn, New  
Milton or Lyndhurst**

**Sopley Primary School**  
South Ripley, Bransgore,  
BH23 8ET  
[adminoffice@sopley.hants.sch.uk](mailto:adminoffice@sopley.hants.sch.uk)  
01425 672343  
[www.sopleyprimaryschool.org](http://www.sopleyprimaryschool.org)



## SNIPPETS FROM THE MINUTES

October 1895: The Clerk instructed to write to Mr.Haddon the Supt. Of Police asking him if he would arrange to send a Constable occasionally to Ripley and North Ripley the early part of the evening as the conduct of the youths was of a disgusting character.

March 1897: (Annual Assembly) Henry Legg asked the attention of the Council to the village of Ripley, as it being inundated with water and if some means could not be used to draw it away. Mr Kemp-Welch and Mr Wort to examine the road and report to the District Council at their next meeting.

June 1938: In connection with the proposal of the Hampshire County Council to institute a system of one-way traffic in Sopley, it was proposed that the Council is opposed to the proposed scheme. The Clerk was instructed to forward the resolution to the Minister of Transport.

June 1938: A new Reep Hook from Streets Stores for use in the cemetery was purchased for 5s. 3d.

June 1938: The Clerk also to write to the Bournemouth and Poole Electricity Company Ltd requesting the company to reconsider its decision not to extend the mains to Avon and Ripley.

June 1940: It was proposed that the three fifteen-inch shells in the parish be offered to the Ministry of Supply as scrap metal to assist in the war, The proceeds to be put to the Red Cross Fund and credited to the parish.

October 1945: Resolved that application be made to the Ringwood and Fordingbridge RDC for a grant of one shilling per head in respect of the 130 children of the parish, under 14 years of age, to take part in the Peace Celebrations.

July 1948: At the Burial Board meeting it was resolved that Mr. C. Clarke be reimbursed the sum of £2-18s-4d for the purchase of a small lawn mower for use in the cemetery.

June 1949: Coronation Seats:- resolved that three pairs of seat-ends be ordered for the following places: Whitfield's Corner, Shirley: Bus stop, Sopley: North Ripley near the letter box. Mr. Kemp-Welch to endeavour to make the necessary arrangements for the timber and for the erection of the seats.

January 1950: It was reported that the telephone Kiosk at Avon had now been erected but there was no light or directory. Resolved that a letter be written asking for these to be installed.

September 1952: The Clerk read a letter from the Ringwood and Fordingbridge RDC that cats-eyes had been laid along the white lines at the dangerous bend near Dismal Swamp.

July 1954: The Clerk reported a letter had been received from the RDC stating the Post Office Authorities intended to erect a Telephone Kiosk at Ripley.

1964: Commencement of a new bridge in Fish Street, Ripley. (Previously a ford.)

September 1966: Noted that plans had been received reference the new Spur Road. Some 6.23 acres of Sopley Common to be taken.

July 1969: Noted that the official opening of the Bournemouth Spur Road was on 13<sup>th</sup> June 1969.

April 1978: It was noted for the record that the following trees had been planted in 1936 to commemorate King George V's Silver Jubilee : one outside the Homestead on the Triangle and one on the green at the Fish Street/School Lane (sic) junction at Ripley.

Summer 2012: Three small Oak trees were planted in the parish to commemorate the Diamond Jubilee of Queen Elizabeth II. One on the recreation ground at Shirley, one at North Ripley crossroads and one in Ripley at the junction with Watery Lane.

C.M.H. 2018.



## Norman Hiscock MINI EXCAVATOR WORK —Fully insured

- LANDSCAPING
- GRAVEL DRIVES
- DITCHING (LOW RATES)
- DRAINAGE
- SITE CLEARANCE
- HOUSE FOOTINGS—OVERSIGHTS
- 3 TON AVAILABLE

**26 Ripley, Nr Christchurch,  
Dorset 01425 674206**



Local beekeeper, based on Dorset/Hampshire border

Swarms collected in Dorset & Hampshire

Local honey for sale

Local nucs & queens often available, April to October

Thinking of keeping bees? Introductory sessions from just £20.00

*Call Zaz on 0794 - 1220201*

***All events are held at the Parish Hall unless  
otherwise stated and are subject to  
change.***

***Please keep an eye on the Parish Boards  
and website.***

***[www.Sopley.gov.uk](http://www.Sopley.gov.uk).***

***Any queries please contact one of the  
Parish Hall committee members or email  
[parish.clerk@sopley.gov.uk](mailto:parish.clerk@sopley.gov.uk)***



All Saints Church will open its doors for viewings of the delightful interior from 1 May to end September between 2-4pm every Saturday.

The church committee is working on some music events during the year, starting with the return of Quattrio on 2nd June for another evening of wonderful baroque music.

Readers may also be interested to hear we are having a detailed survey undertaken of the churchyard, aimed at capturing information on both marked and unmarked graves. This will be created by volunteers (support welcome!) and the output will be turned into an online forum where families can add details of their loved ones - photos, stories and family trees. Details will be made available on the Facebook page "All Saints Thorney Hill".

### **Sopley Farm Pick Your Own**

Open between May and October, and with fruit and vegetable fields in both Derritt Lane, Sopley and on the A35 near the Cat and Fiddle Inn at Hinton, Sopley Farm supplies a wide range of delicious local PYO and ready-picked soft fruit and in-season vegetables including their prized Sopley asparagus - the 2018 harvesting of which will shortly be underway!

SopleyFarmPYO, Derritt Lane, Sopley BH23 7AZ Phone 01425 672451

### **Sopley Salads**

Dennis and Zhivka Tanner grow a wide variety of seasonal vegetables and salad crops on their farm in Priest's Lane, Sopley. They sell their produce direct to the public through the local farmers markets network - including Christchurch Market on Mondays and Wimborne Market every Friday.

Sopley Salads

Badgers Farm, Priests Lane, Sopley

Phone 01425 674150 Email: [sopleysalads@btinternet.com](mailto:sopleysalads@btinternet.com)



Previously known as Sopley Camp and Merryfield Park, the re-named Heatherstone Grange housing development in Derritt Lane is nearing completion.

I am one of the new Sopley Parish residents who have already moved into our homes on the development, and my new neighbours and I are keen to generate a sense of community, having come from near and far.

It's been just over a year since I moved into the area, and already I have talked to more neighbours and developed more new friendships in my neighbourhood, than I did in twenty years in my previous home. It's because we are all new together here on the development. Many of the new residents have told me that they are delighted to be living in such a welcoming and friendly area, and have had a similar experience to my own.

We have already made good use of the Sopley Parish Hall to hold a gathering of Heatherstone Grange neighbours to form a residents group, and received a very warm welcome from the parish hall team. The new residents had a great evening getting to know each other. A Facebook Group page has recently been set up to act as a forum for chats, skill sharing, recommendations about local trades people, organising social occasions and general information sharing about the progress of the final stages of the building site.

We are also hoping to use the Facebook Group page as a sort of Neighbourhood Watch facility too, to improve safety and security in the area. For any Heatherstone Grange resident who has not yet joined up, and would like to do so, the Facebook group page is called "Heatherstone Grange Residents Postbox" which can be found by typing that name into the Facebook search box, and then applying to join the group, which is open to Heatherstone Grange Residents only at present.

Many new residents to whom I have spoken appreciate the local significance and history of the site, particularly as the Friends of the New Forest Airfields (FONFA) have maintained a valuable presence at the FONFA museum in Mosquito Way; they are also aware that the site served as a reception camp for Vietnamese Boat people in the 1980's. We may be the latest in an interesting and varied line of occupiers of this site, but I and other members of the Heatherstone Grange Residents Group hope that we will be the last in that line for a long time to come, enjoying our homes for many years. We also hope that the extra families brought to the area will generate a long-term benefit to the local economy by engaging with local businesses and local tradespeople, and joining in with local social activities and groups. We plan to use our Facebook Group Page to promote forthcoming parish events, through our links to the parish council'

Kind Regards,

**Joanne Mencner**

[jomencner@icloud.com](mailto:jomencner@icloud.com)

**Lynda Asquith**

[lynda.asquith@gmail.com](mailto:lynda.asquith@gmail.com)





Photograph supplied by Ryan Hughes Photography.

Enquiries to Ryan on 07506 854161 or email ryjohughes@live.co.uk

## What we collect

### YES PLEASE

All glass bottles and jars, including:

- Coffee jars
- Jam jars
- Wine, spirit and beer bottles
- Sauce jars
- All colours and sizes

Rinse out then place loose in your glass collection box (no carrier bags or lids please).

Please place your box in plain sight by 7.00am on your collection day.

If you need an extra glass collection box visit your local information office to pick one up



### NO THANKS

- Drinking glasses
- Window pane glass
- Glass kitchenware
- Crockery
- Broken glass
- Light bulbs



Recycle Right

remindme

Sign up for collection day reminders  
[newforest.gov.uk/remindme](http://newforest.gov.uk/remindme)

### TEXT

GLASS to 81025 with your first and last name, first line of your address and postcode

## Household glass collection



Write your collection information in the boxes\*

Week colour

Collection day

APRIL 2018							
M	Tu	W	Th	F	S	S	
Yellow						1	
Purple	2	3	4	5	6	7	8
Green	9	10	11	12	13	14	15
Blue	16	17	18	19	20	21	22
Yellow	23	24	25	26	27	28	29
						30	

MAY 2018							
M	Tu	W	Th	F	S	S	
Purple	1	2	3	4	5	6	
Green	7	8	9	10	11	12	13
Blue	14	15	16	17	18	19	20
Yellow	21	22	23	24	25	26	27
Purple	28	29	30	31			

JUNE 2018							
M	Tu	W	Th	F	S	S	
Purple					1	2	3
Green	4	5	6	7	8	9	10
Blue	11	12	13	14	15	16	17
Yellow	18	19	20	21	22	23	24
Purple	25	26	27	28	29	30	

JULY 2018							
M	Tu	W	Th	F	S	S	
Purple						1	
Green	2	3	4	5	6	7	8
Blue	9	10	11	12	13	14	15
Yellow	16	17	18	19	20	21	22
Purple	23	24	25	26	27	28	29
Green						30	31

AUGUST 2018							
M	Tu	W	Th	F	S	S	
Green			1	2	3	4	5
Blue	6	7	8	9	10	11	12
Yellow	13	14	15	16	17	18	19
Purple	20	21	22	23	24	25	26
Green	27	28	29	30	31		

SEPTEMBER 2018							
M	Tu	W	Th	F	S	S	
Green					1	2	
Blue	3	4	5	6	7	8	9
Yellow	10	11	12	13	14	15	16
Purple	17	18	19	20	21	22	23
Green	24	25	26	27	28	29	30

Ensure your box is out by 7.00am on collection day and contains glass bottles and jars only

\*To check your collection day or for more information visit [newforest.gov.uk/glass](http://newforest.gov.uk/glass)

## USEFUL NUMBERS, CONTACTS AND INFORMATION

### **Parish Councillors**

**Chairman\*** Daniel Shutler  
64 Fish St, Ripley, Bransgore  
Christchurch, BH23 8EU  
01425 673113

Cllr. Andrew Rawstron  
17 Sopley, Christchurch,  
Sopley, BH23 7AX  
01425 672033

Cllr. Anj Hill  
Fish St, Ripley, Bransgore  
BH23 8EU  
07711 655529

Cllr. John Eccles  
Bladen Cottage  
Burnt House Lane, Bransgore  
BH23 8AL  
01425 673022

Cllr. Julia Emmel  
6 Meadow Close  
Sopley  
BH23 7BD  
01425 672697

Cllr. Teela Liberty-Spark  
The Woolpack Inn, Sopley  
BH23 7AX  
01425 672252

Cllr. Carole Smedley  
Brook Cottage, Ripley  
BH23 8EU  
07813 625611

**\* The Offices of Chairman and Vice Chairman of the Parish Council for the coming year, together with the composition of the various Council Committees, are decided by Council vote at the Annual General Meeting of the Council—which will be held on May 17, 2018 immediately preceding the Annual Parish Assembly.**

**Website:** [www.sopley.gov.uk](http://www.sopley.gov.uk)

Parish Clerk - Mrs Katie Hughes

Parish.clerk@sopley.gov.uk  
01425 674833/ 07935 448405

### **Sopley Parish Hall (Bookings)**

Dianne Banger 01425 474957

### **Sopley School**

01425 672343

### **St Michaels & All**

### **Angels Parish Church**

Liz Bishop 01425 672628

### **Where can you find out more about the Parish Council?**

Parish Noticeboards are located in Sopley Village at the Parish Hall and in the layby adjacent to Sopley Forge, in Ripley next to the phone box/post box, in Avon by the old forge at the entrance to London Lane and in Ringwood Rd, Shirley next to Letterbox Cottage.

Parish Council Meetings are held every 2 months - usually on the third Thursday of the month - and are open to all

Parishioners and interested parties.

Meeting dates, venues and agenda details are posted on the notice boards and the parish website ([www.sopley.gov.uk](http://www.sopley.gov.uk)). The website also contains lots of useful local links to businesses, local authorities and community groups and organisations.